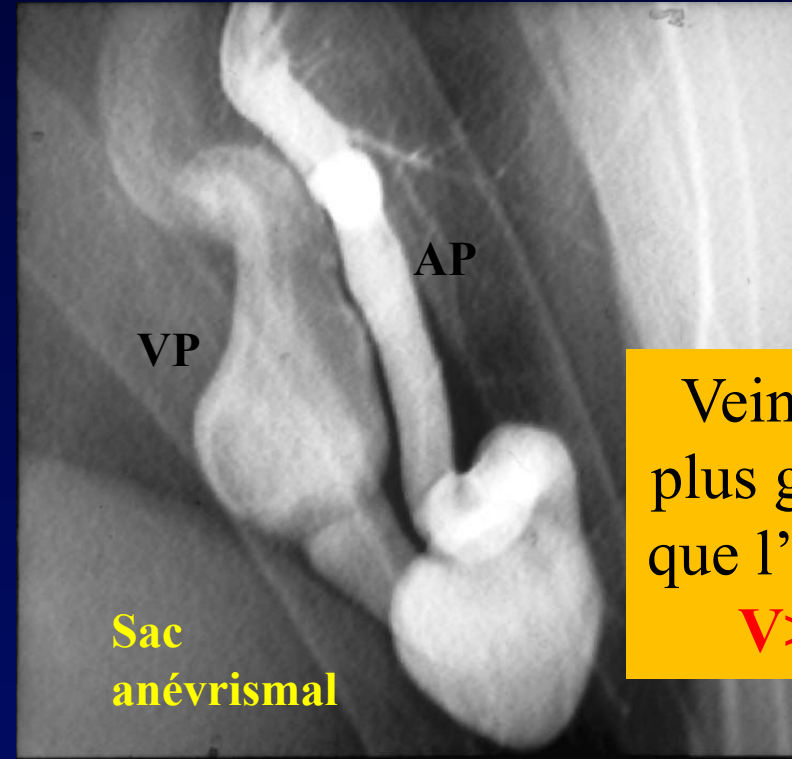
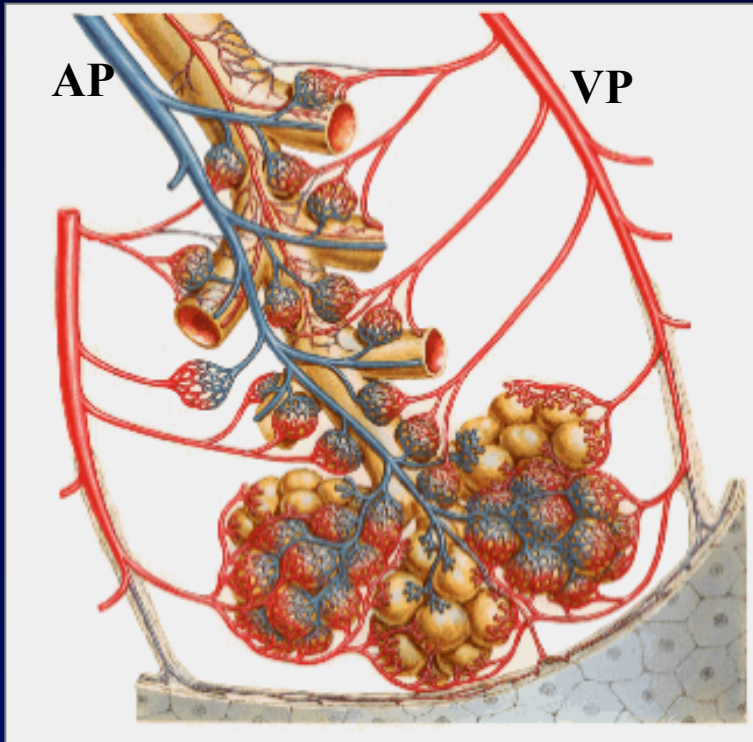




Fistule ou Malformation Artério-Veineuse Pulmonaire (FAVP = MAVP)



Veine tjrs plus grosse que l'Artère
V > A

Incidence de 15 à 35% dans la MRO
Type I – Mutation Endogline

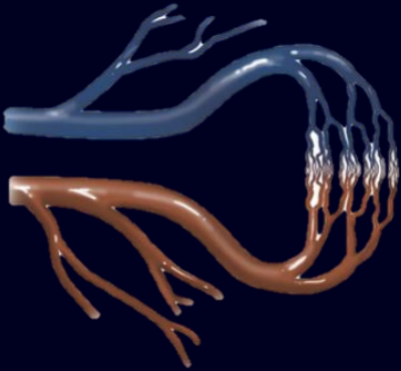
Conséquences :

- **Shunt droit-gauche** : polyglobulie, hypoxémie, hippocratisme
- Disparition du **filtre pulmonaire** (embolies systémiques) cruoriques, septiques, gazeuses

Abcès cerveau

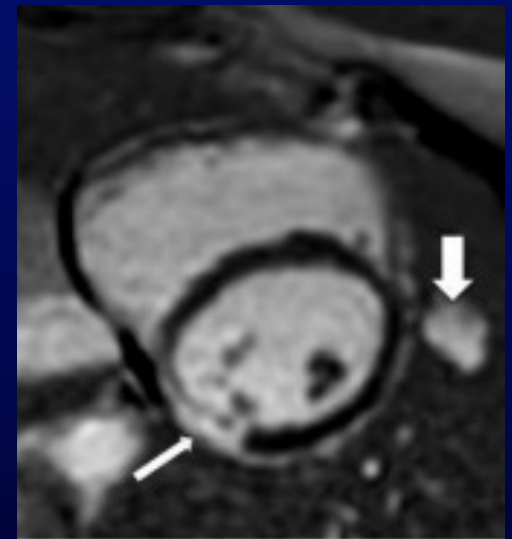
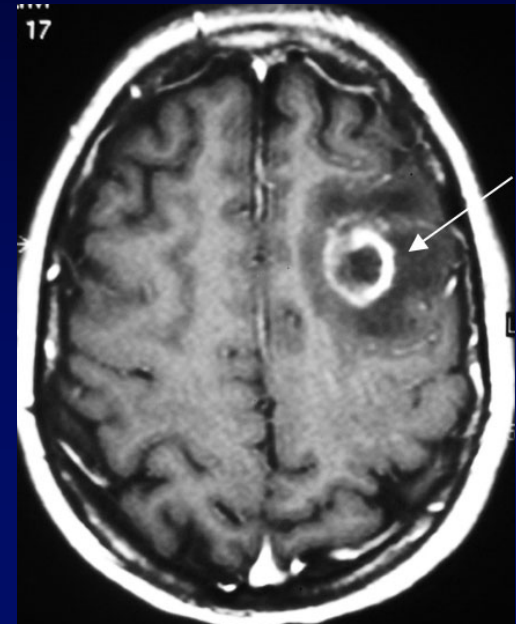
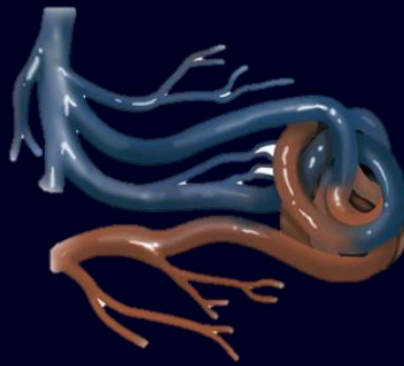
Embolie paradoxale systémique

Lit capillaire normal



Fistule AV
Simple et Complexe

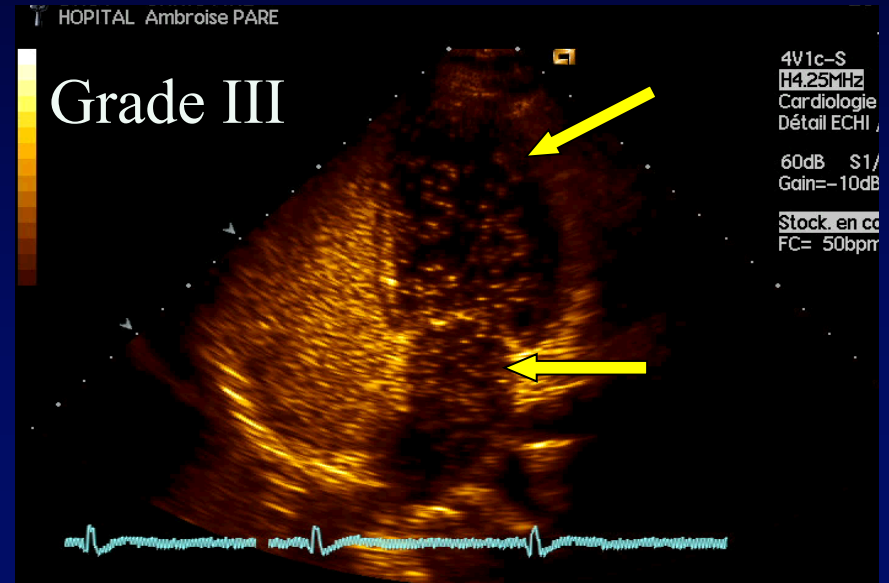
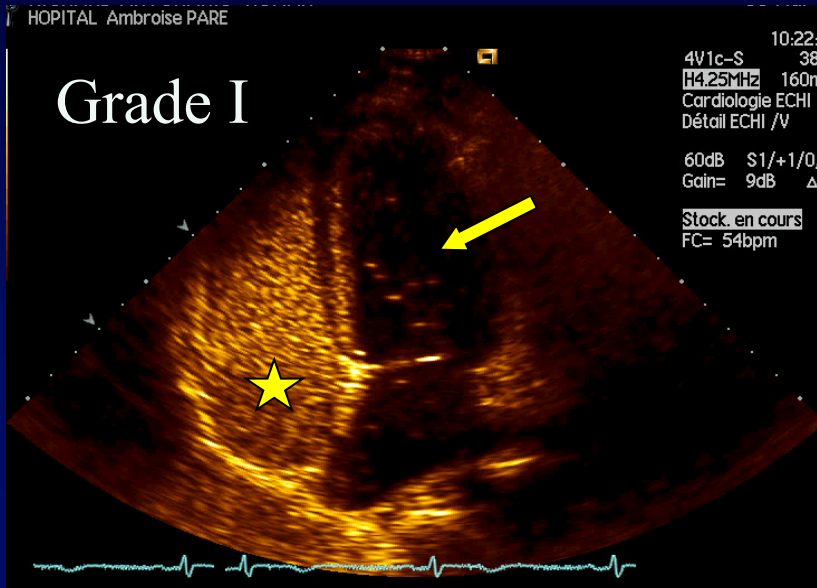
Unique
Multiple
Diffuse



Infarctus Myocarde

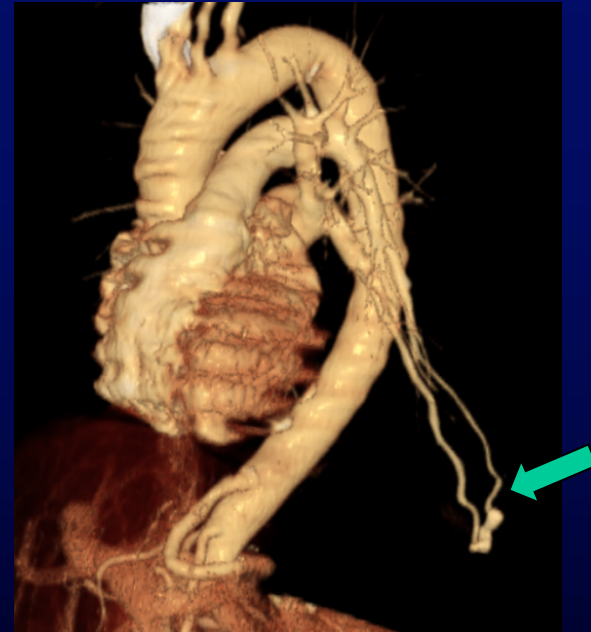
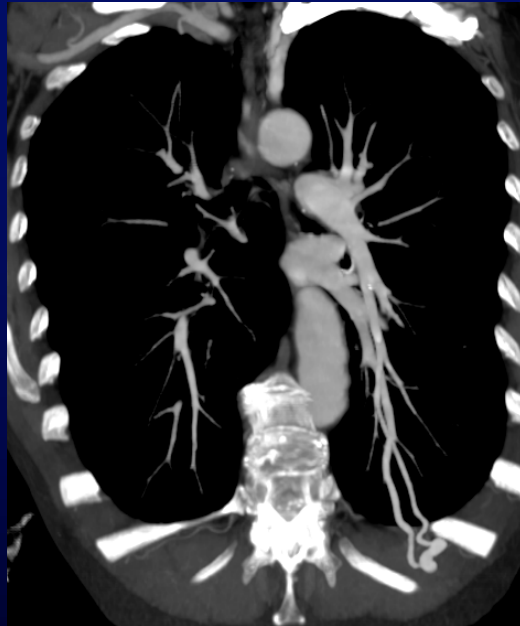
IMAGERIE DIAGNOSTIQUE DES MAVP

Echocardiographie trans-thoracique de contraste (ECTT)



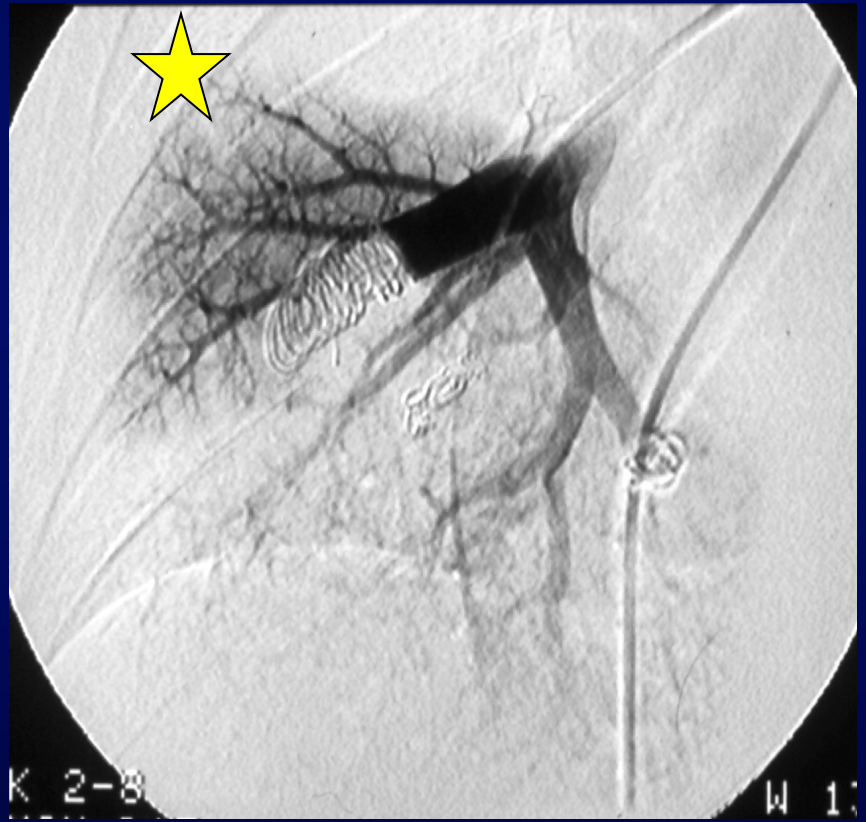
Angio-TDM

Architecture
Calibre artère
afférente





Embolisation = Vaso-Occlusion





Title: Safety and efficacy of microcatheterization and microcoiling in MAVPs

PHYSICIAN

Mostafa EL HAJJAM M.D



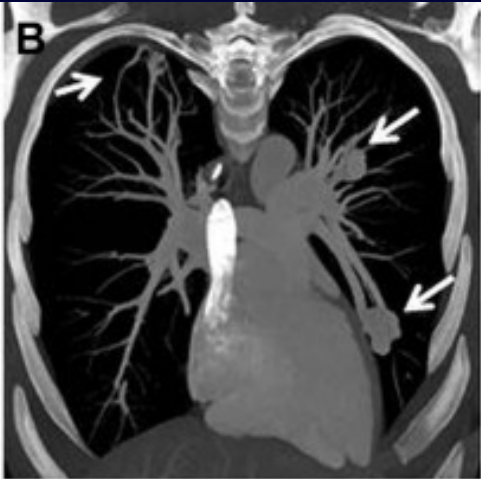
LOCATION

Department of Radiology
Ambroise Paré Hospital
Boulogne – 92100 - France

Bonne évolution après Embolisation de 3MAVP

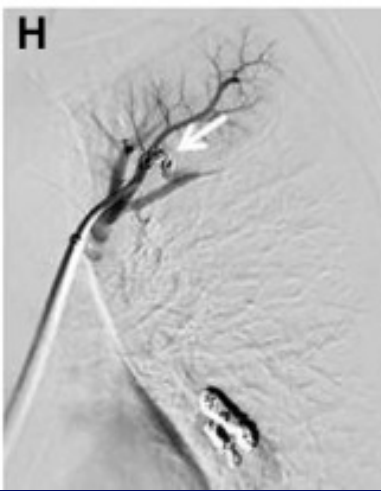
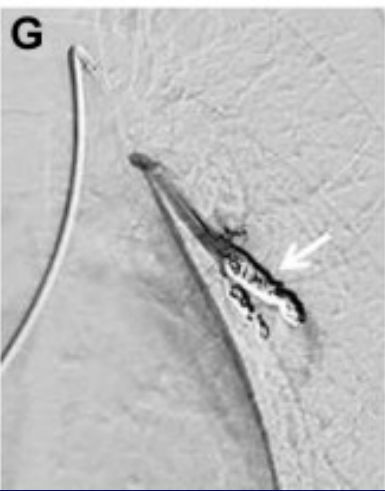
Grade III

Pré



Grade I

Post



C Karam, N Mansencal, E Puymirat, E Charpentier, A Palmyre 5, T Chinet , M El Hajjam
Myocardial Infarction leads to Diagnosis and Treatment of a Rare Disease
Chest . 2022 Jul;162(1):e49-e52. doi: 10.1016/j.chest.2022.01.066.