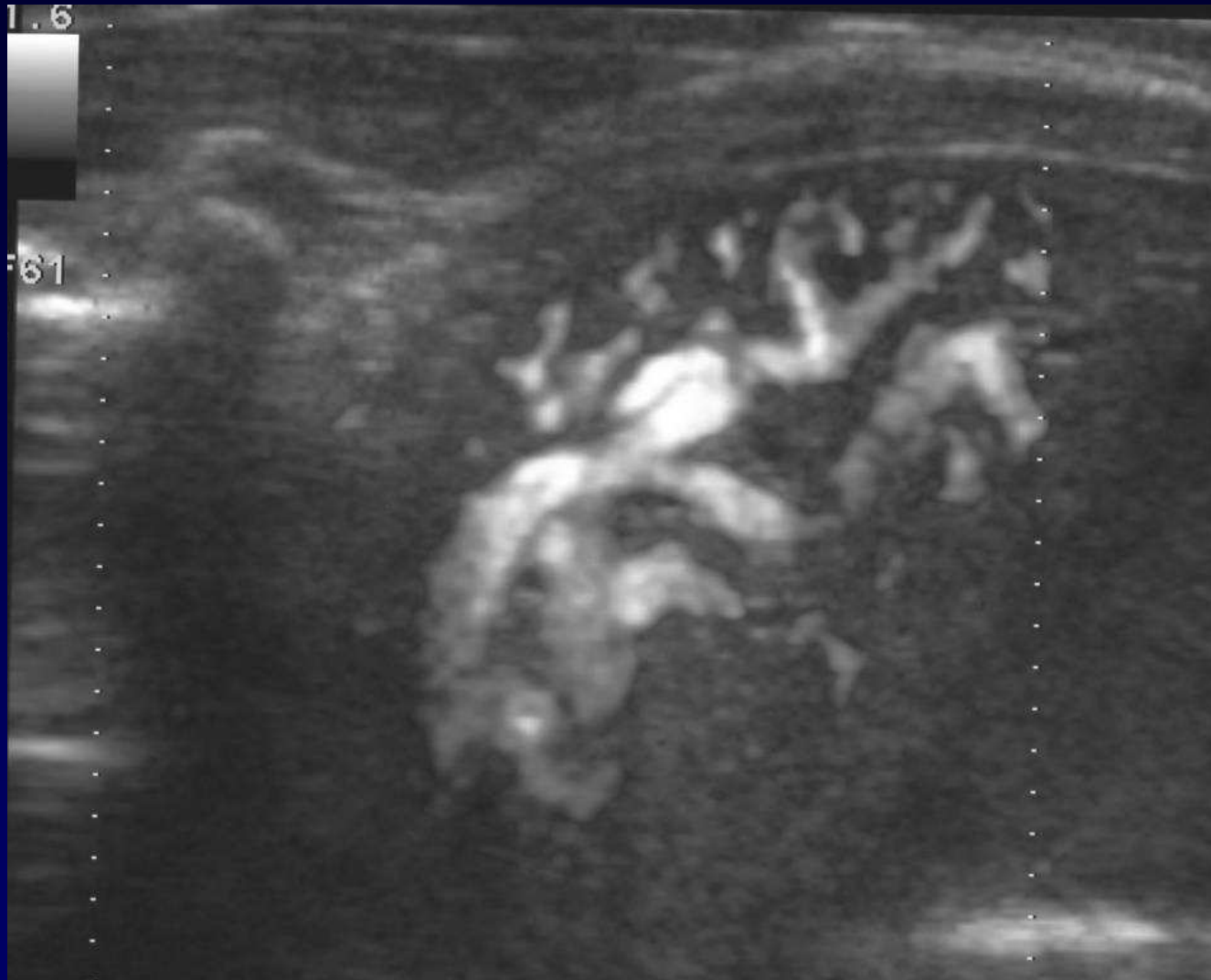


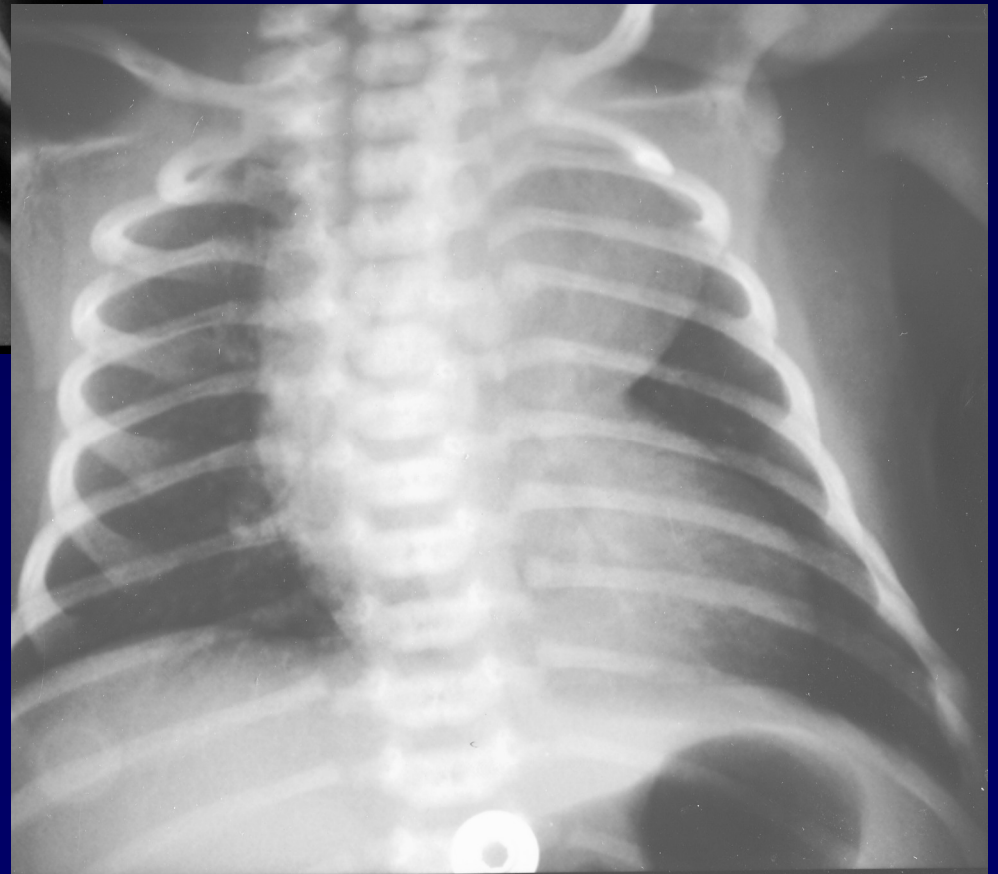
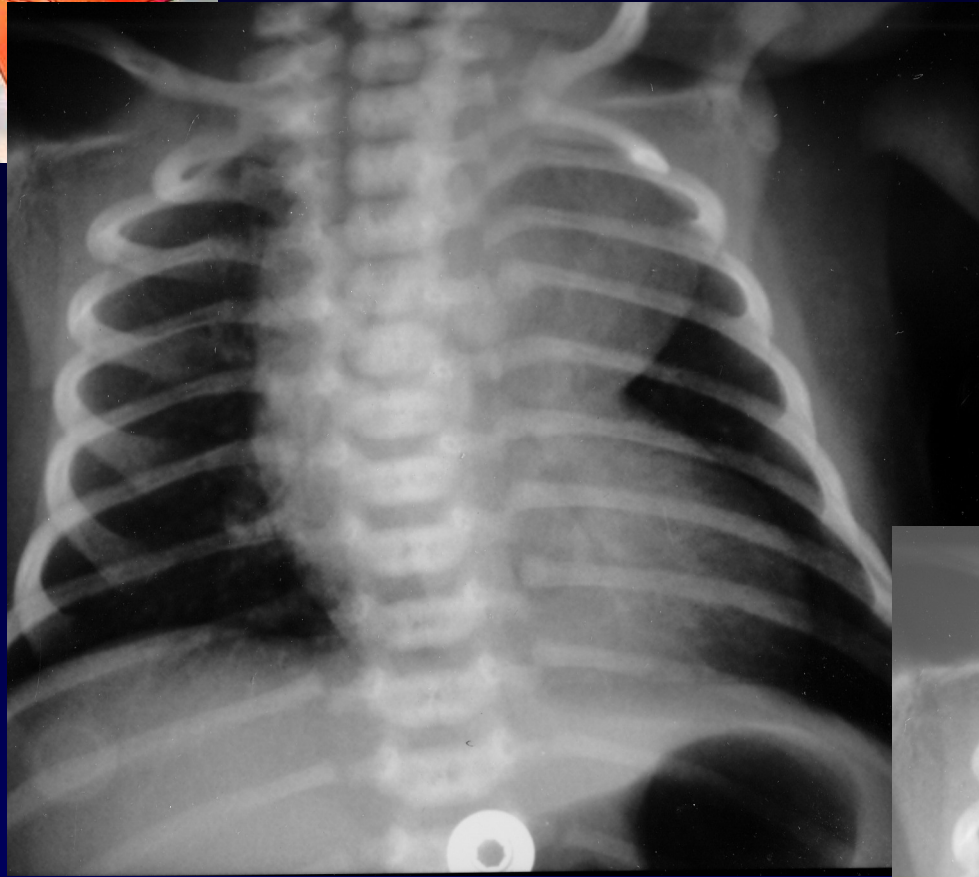
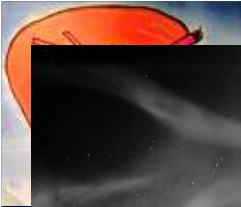


**L. METGE**

**Nouveau né de 7 jours**

**Anomalie échographique de découverte  
anté-natale**







06/2007  
40:45.75  
MA 1  
R

7 IMA 3  
MPR

Sp  
Tilt

R

F

MA 4  
R

Spin: 0  
Tilt: -90

F

SP R

08/2007  
40:45.75  
MA 6  
R

A 8

Spin:  
Tilt: -

F

15.75  
10

Sp  
Tilt

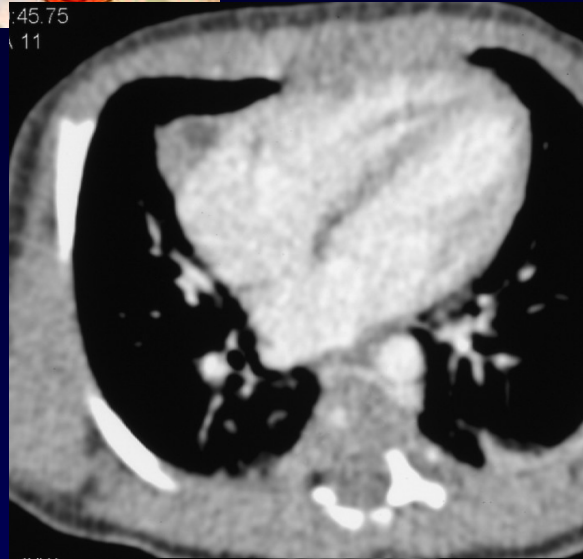
Spin: 0  
Tilt: -90

F

S



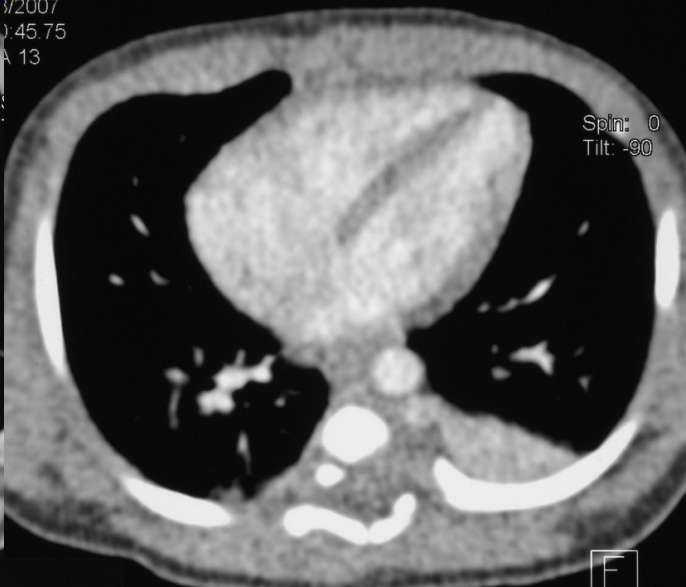
45.75  
11



45.75  
12



2007  
45.75  
A 13



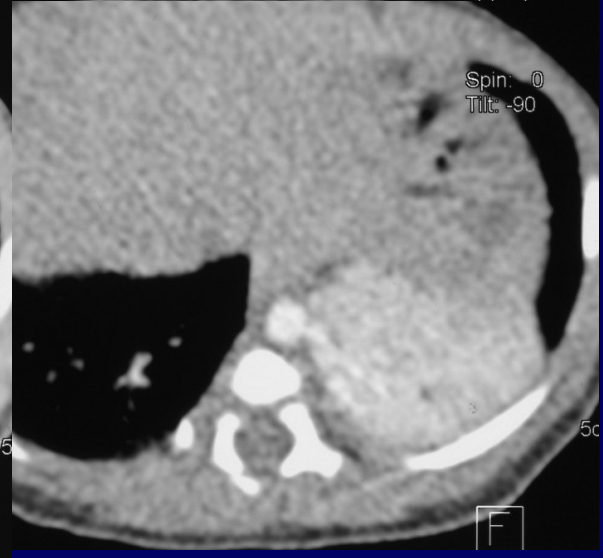
2007  
45.75  
15



2007  
45.75  
16



Spin: 0  
Tilt: -90



Spin: 0  
Tilt: -90



**Diagnostic ?**



# Diagnostic

**Diagnostic suspecté en anté-natal**

**Echographie : Artère systémique**

**TDM : Analyse du retour veineux**



**Séquestration pulmonaire**