



Dossier 12

J GIRON

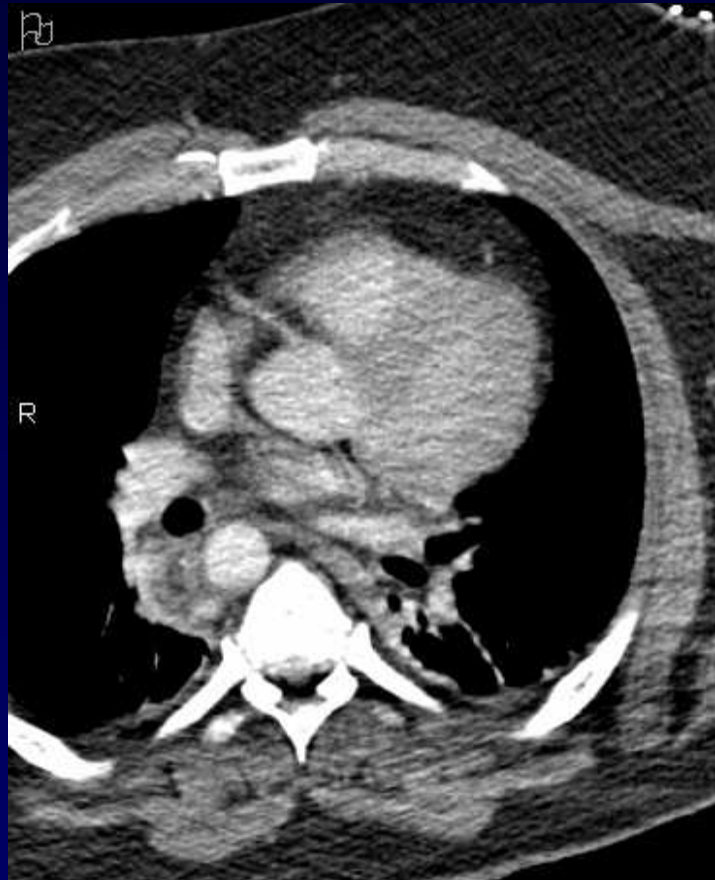
P FAJADET

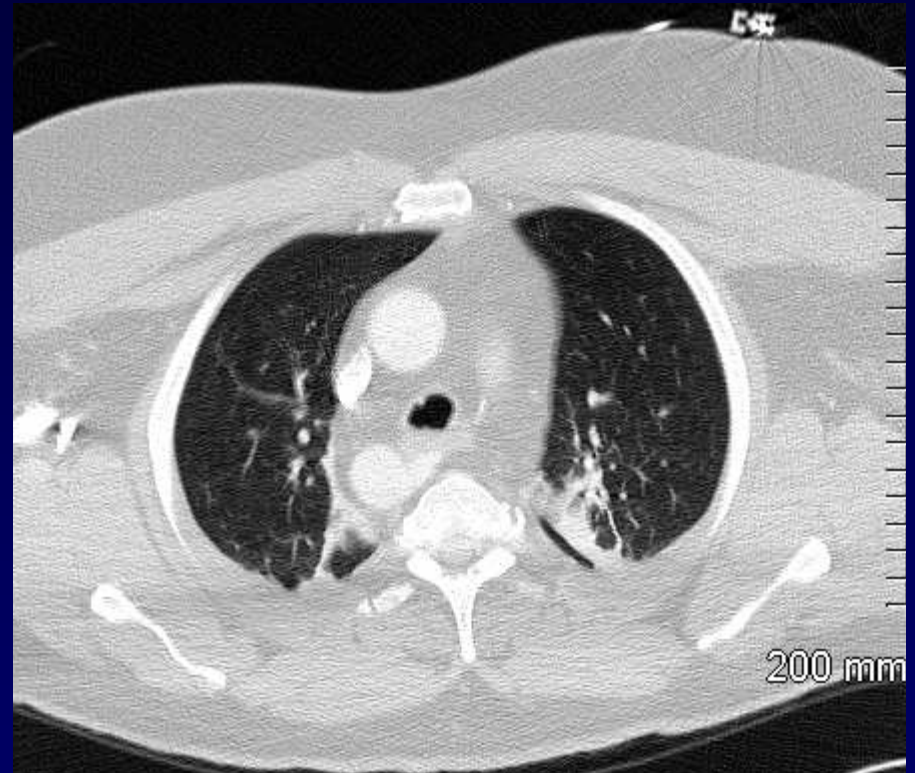
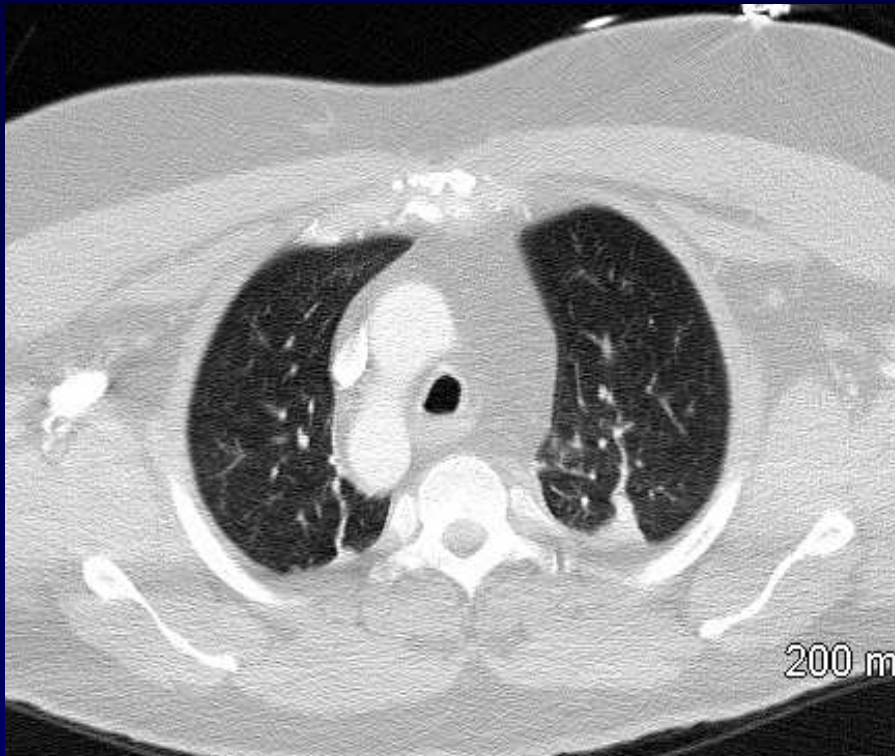
Homme de 56 ans , AVP

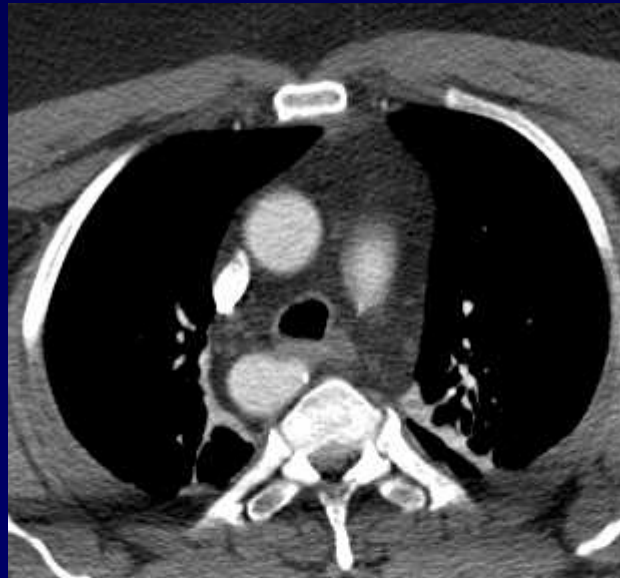
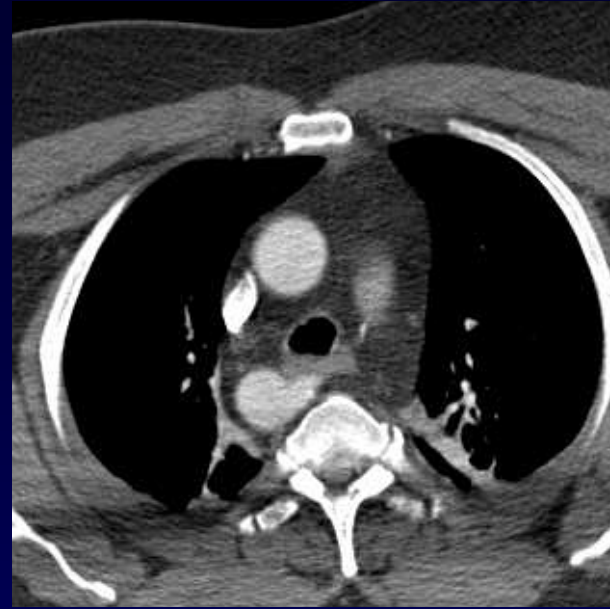
RACHIS, sans signe neuro , HEMATEMESE

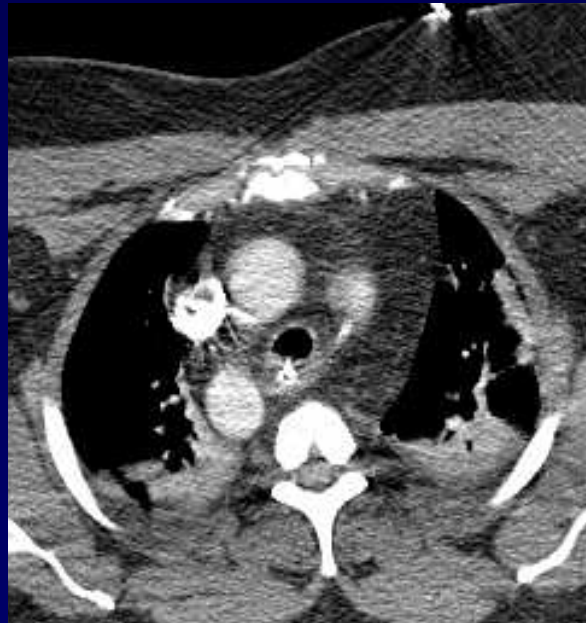
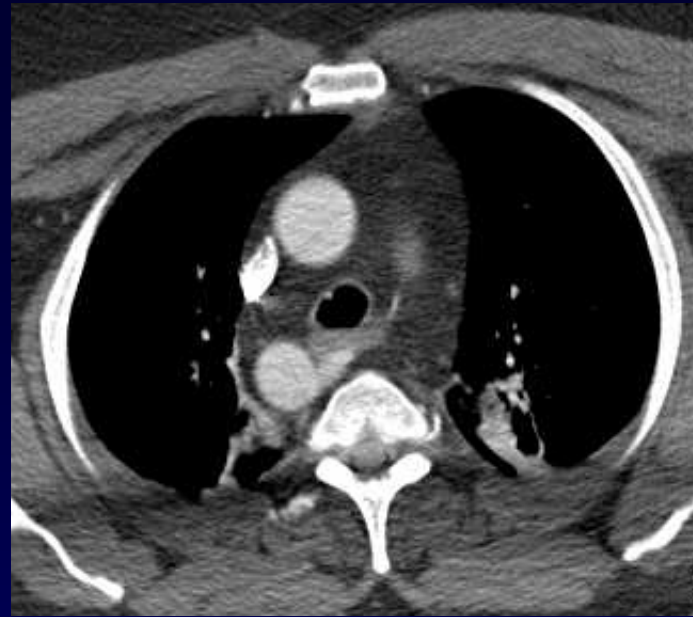














Diagnostic ?



Diagnostic

ARC AORTIQUE DROIT

ANOMALIE DE NEUHAUSER

LIGAMENT ARTERIEL PERMEABLE

« DIVERTICULE DE KOMMERELL »

Insertion aortique



Evolution - Discussion

HEMATEMESE : Liée à NEUHAUSER ?

A priori non

EVOLUTION CLINQUE FAVORABLE