



Dossier 9

L METGE

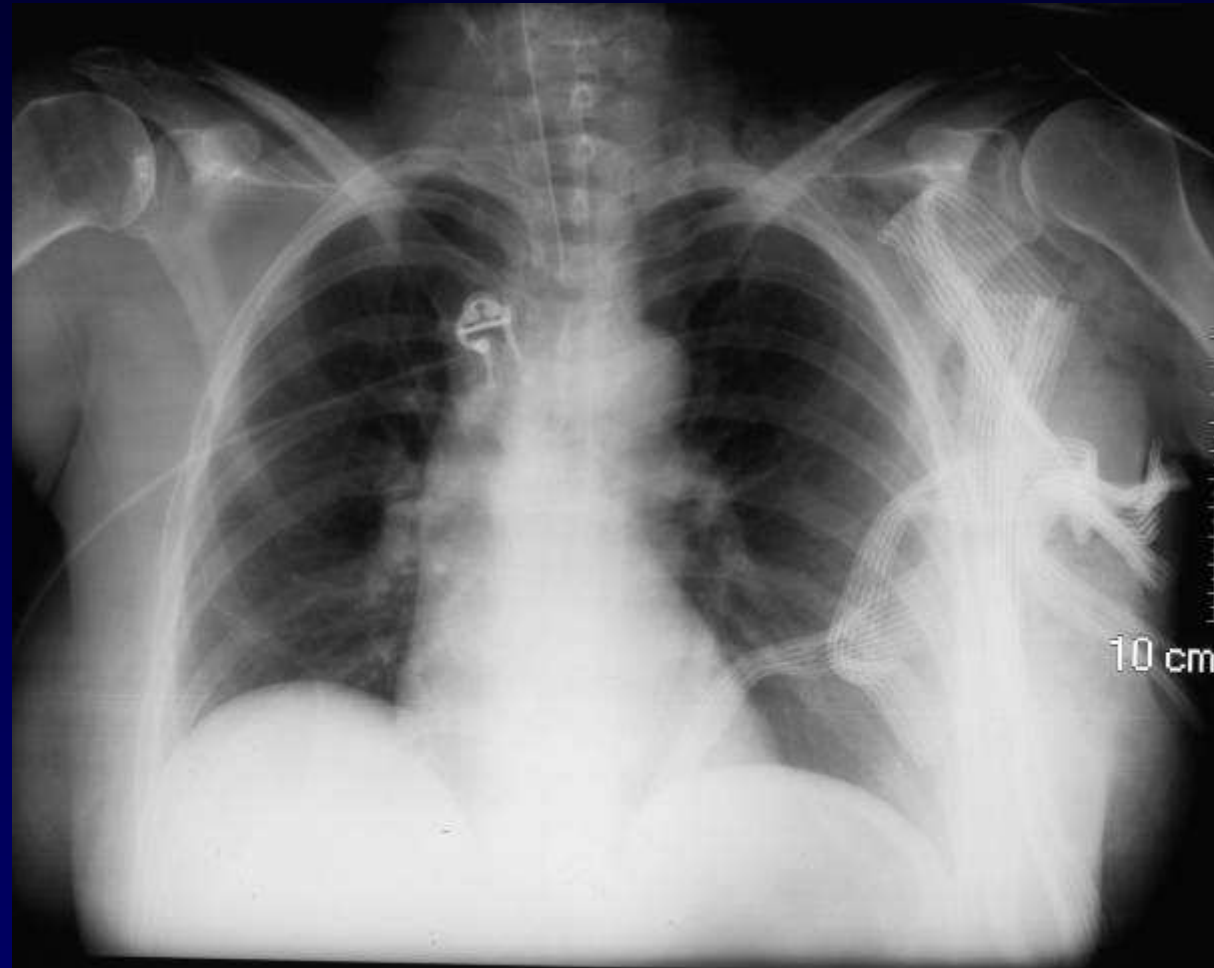
Femme de 58 ans

Alcoololo-tabagique

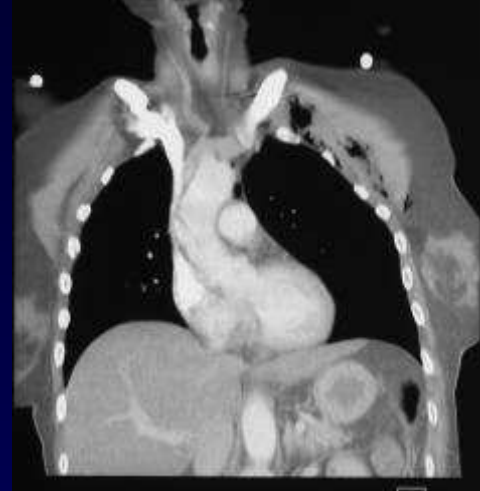
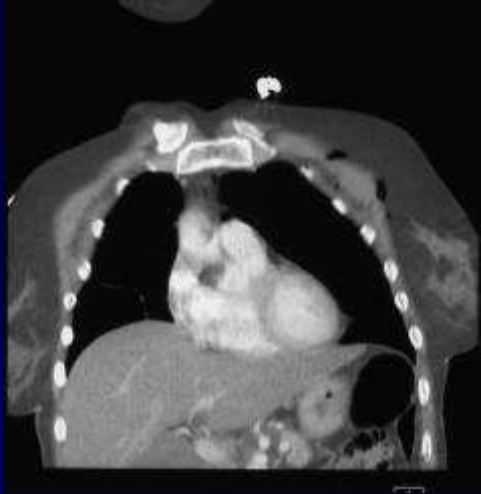
Retrouvée au sol à domicile

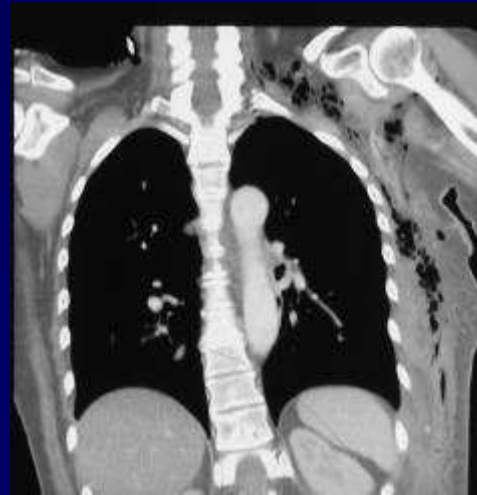
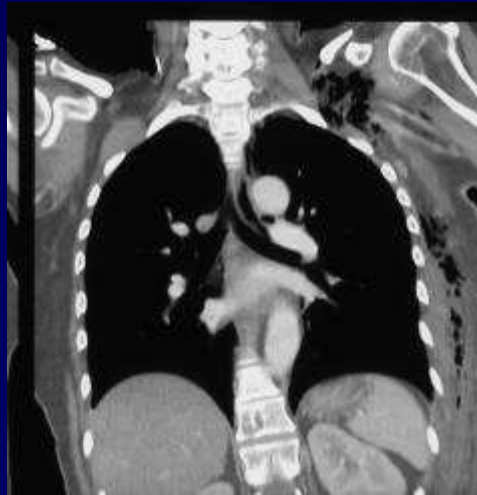
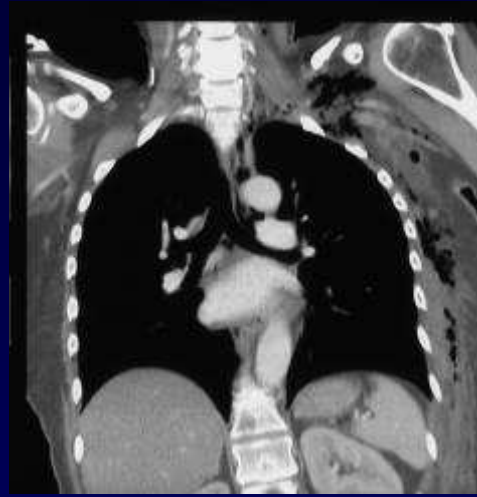
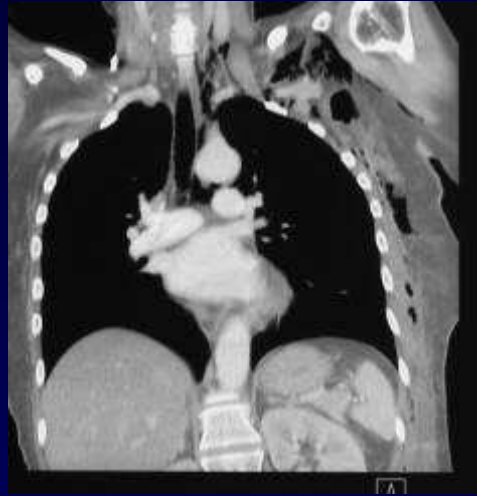
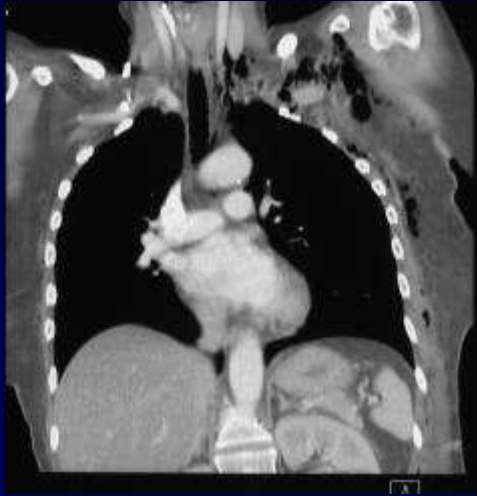
Plaie infectée avec abcès axillaire gauche

→ chirurgie



RT après intervention







Diagnostic ?



Diagnostic

Pneumomédiastin

Codage : Médiastin- anatomie



Evolution-Discussion-Point fort

Diffusion de l'air axillaire vers le cou puis dans le médiastin le long des structures vasculaires



Evolution-Discussion-Point fort

