



Dossier 3

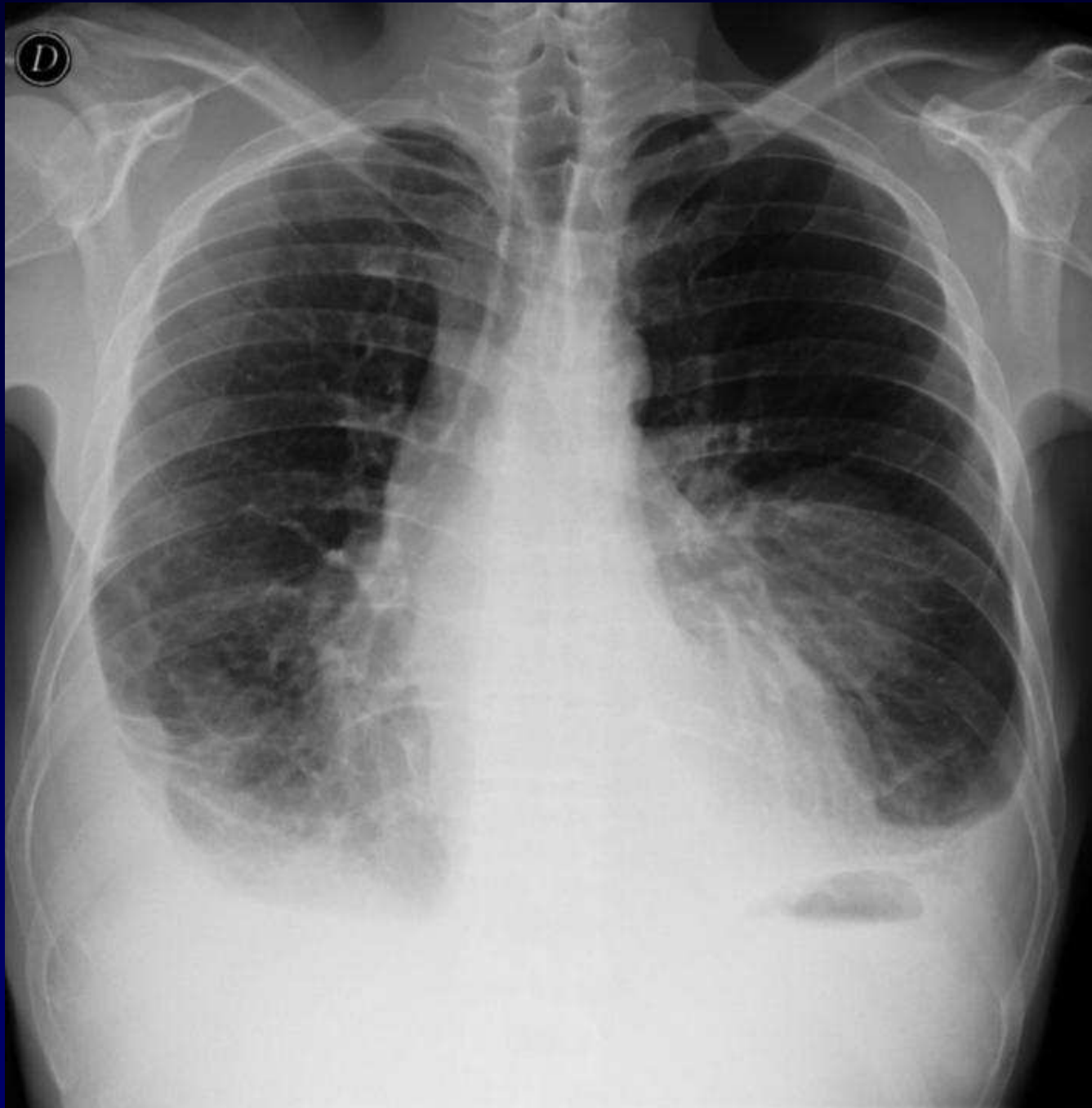
A KHALIL

MF CARETTE

Homme de 56 ans

Intoxication éthylique

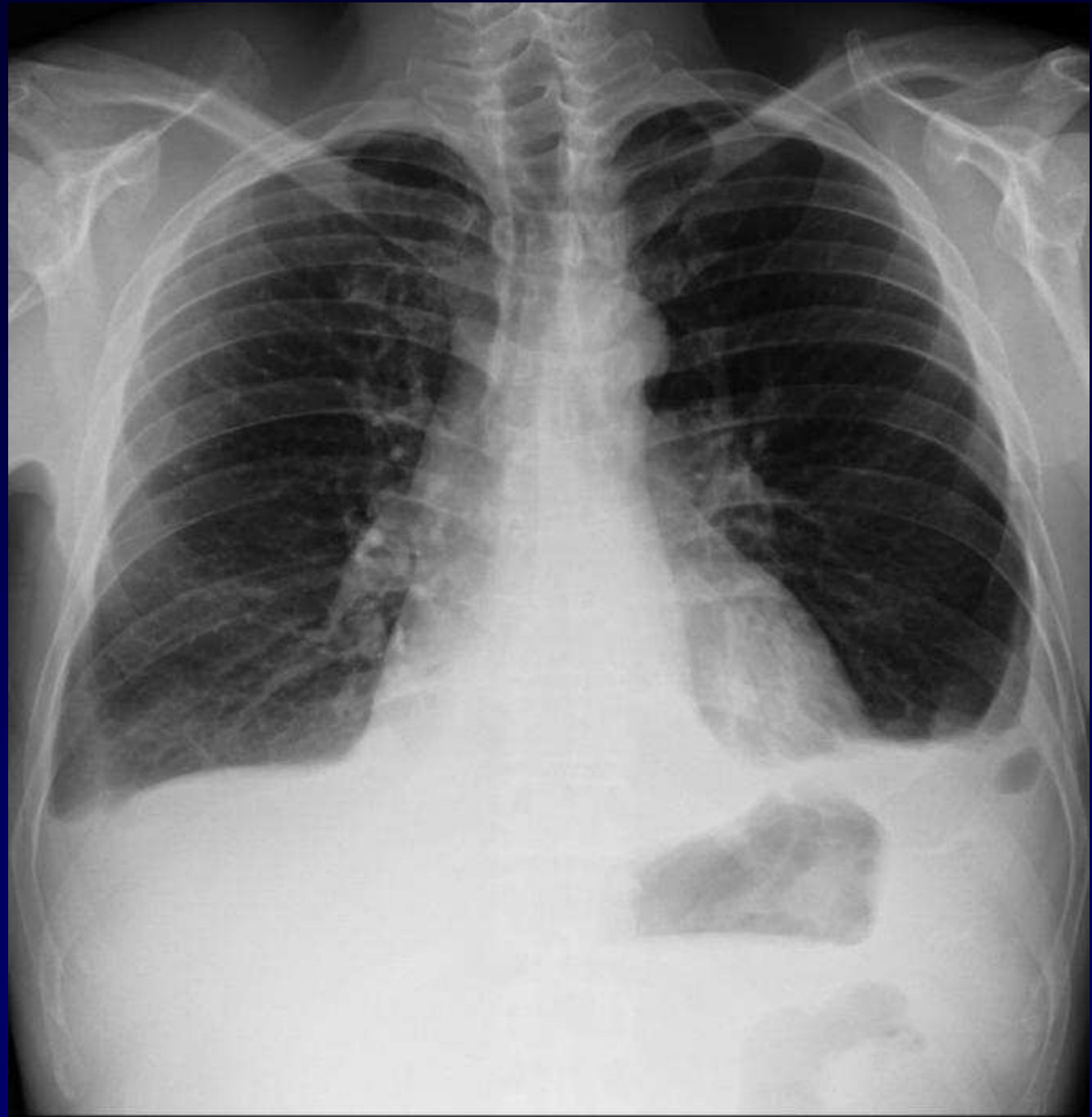
Douleur thoracique





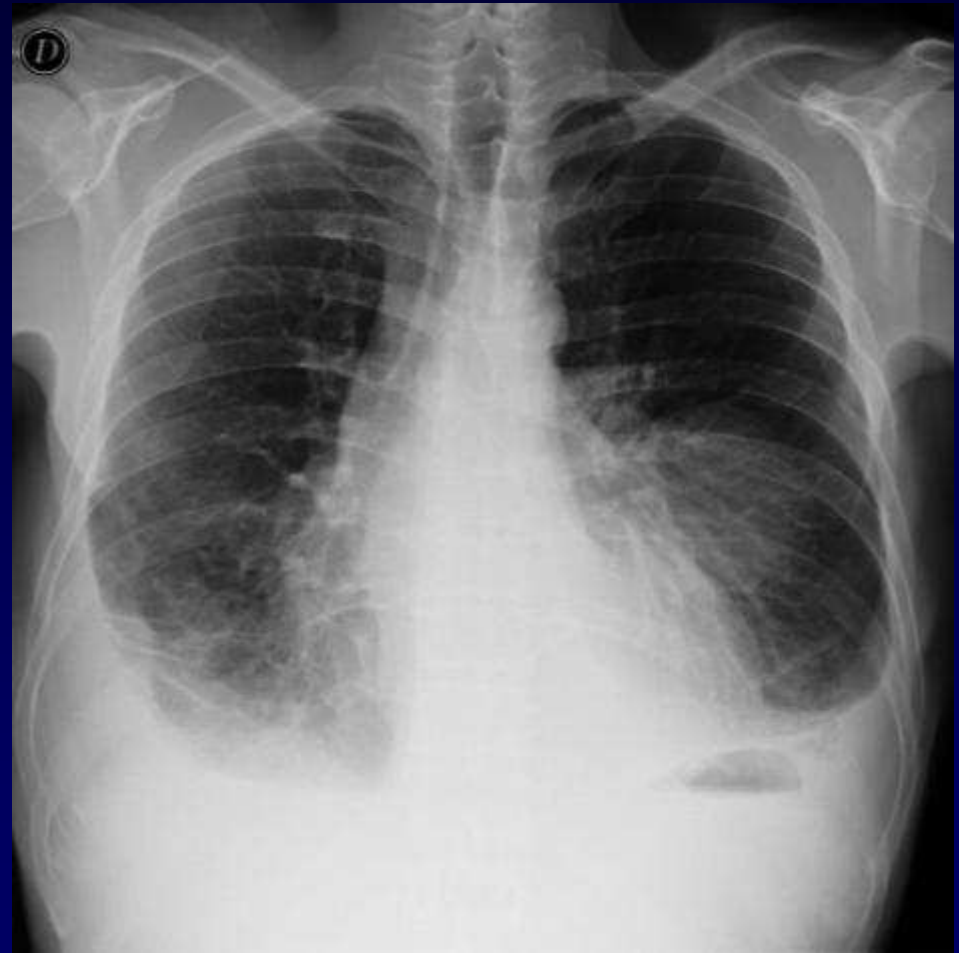
Radiographie thoracique

6 mois
auparavant

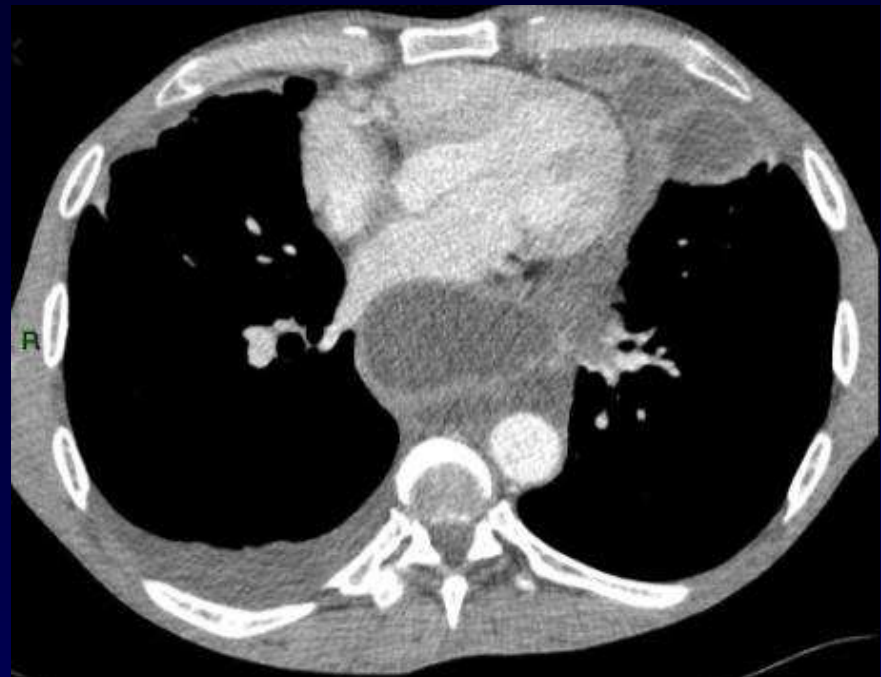


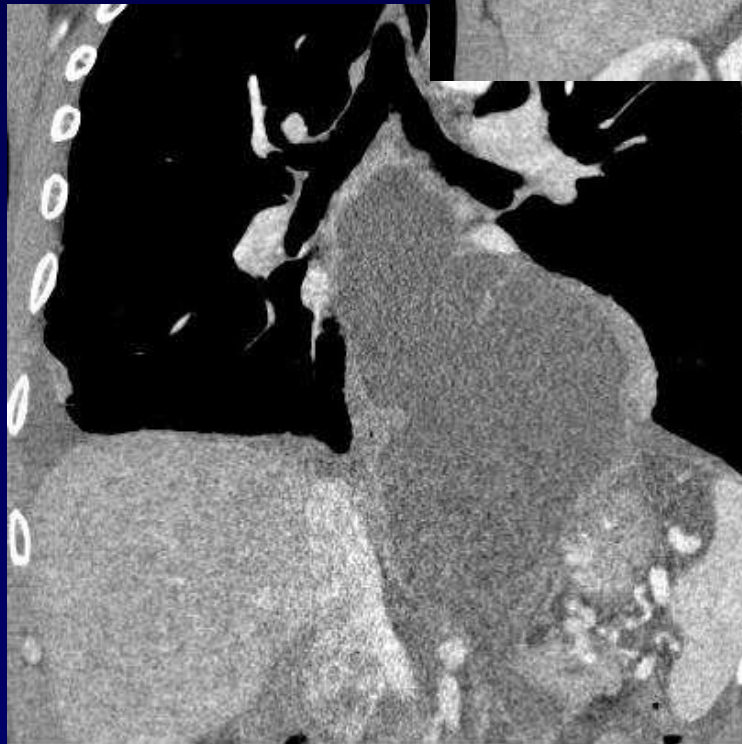


Janvier 2009



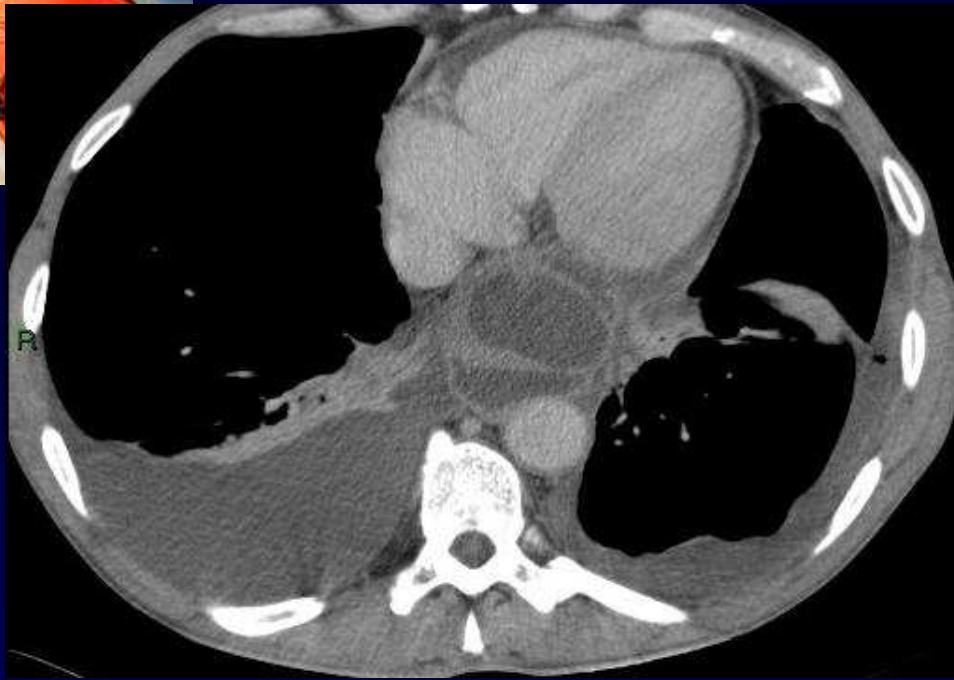
Juin 2009







Diagnostic ?



TDM
Janvier
2009





Diagnostic

Faux kyste pancréatique intra-médiastinal



Evolution

**Traitement par drainage thoracique antérieur
sous guidage TDM**

Evolution favorable.