



Dossier 6

B Ghaye

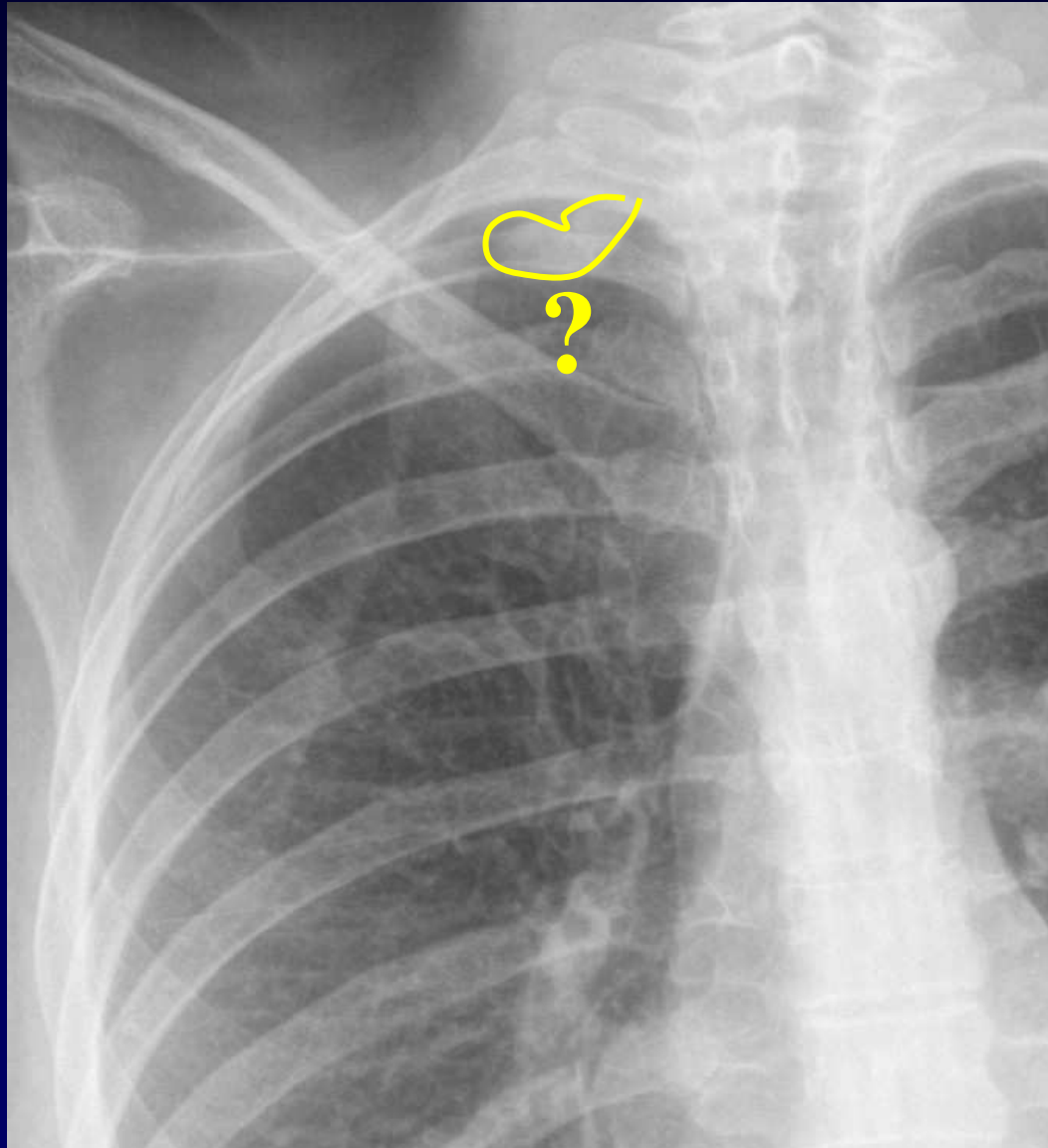
Femme de 38 ans

Dyspnée après inhalation de produit contre les moisissures



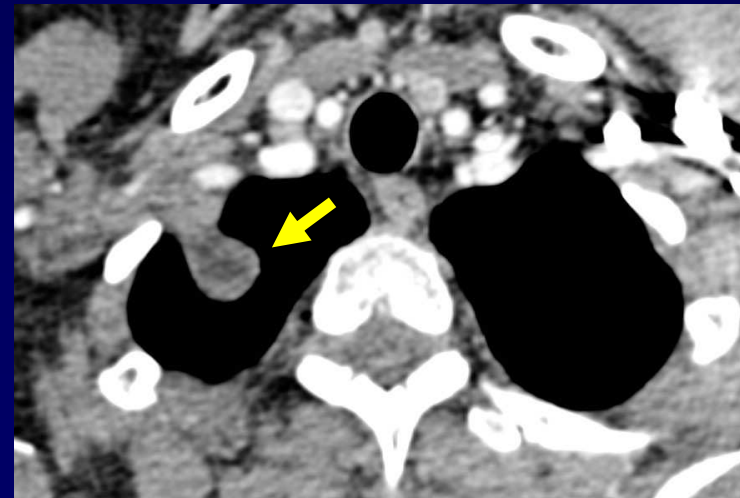
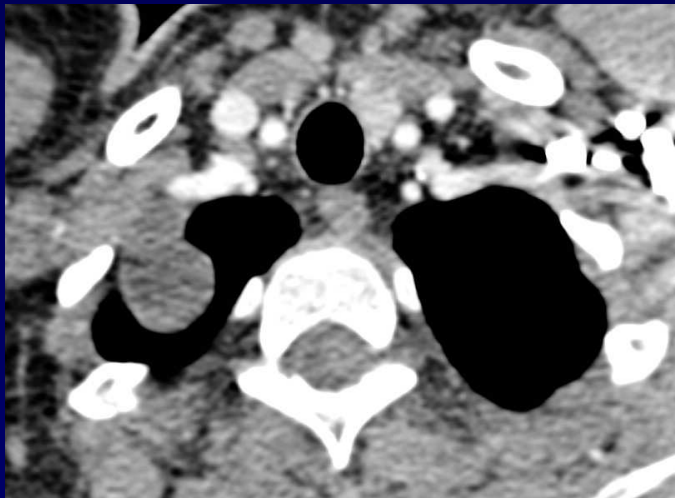
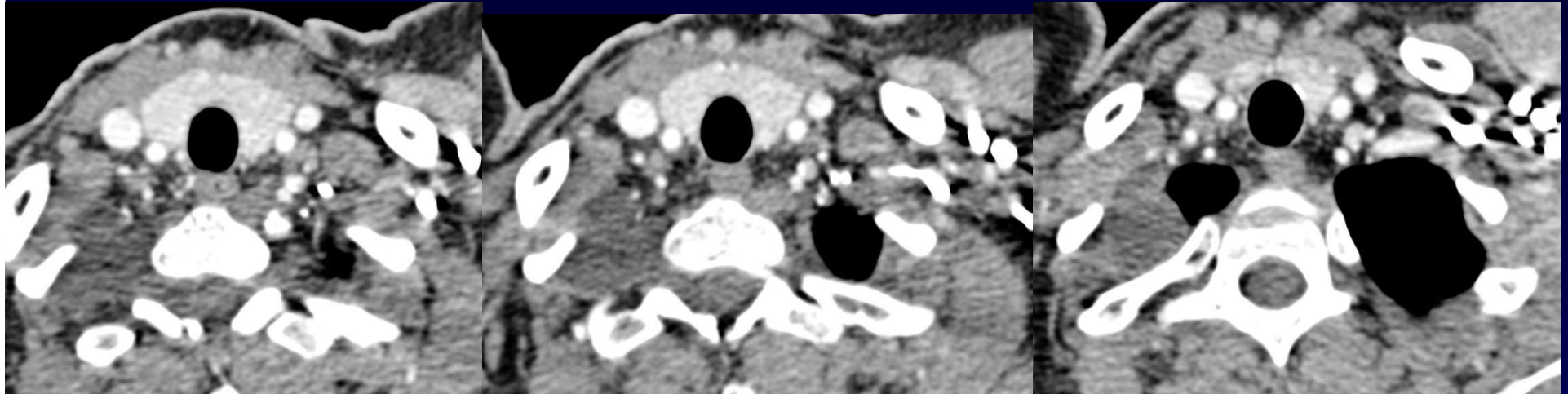


Un peu d'aide ?





TDM

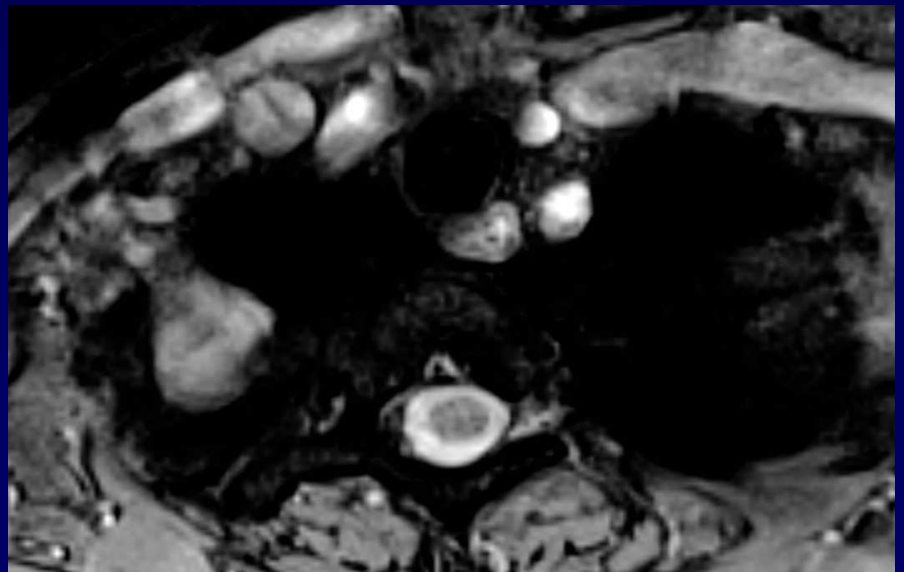
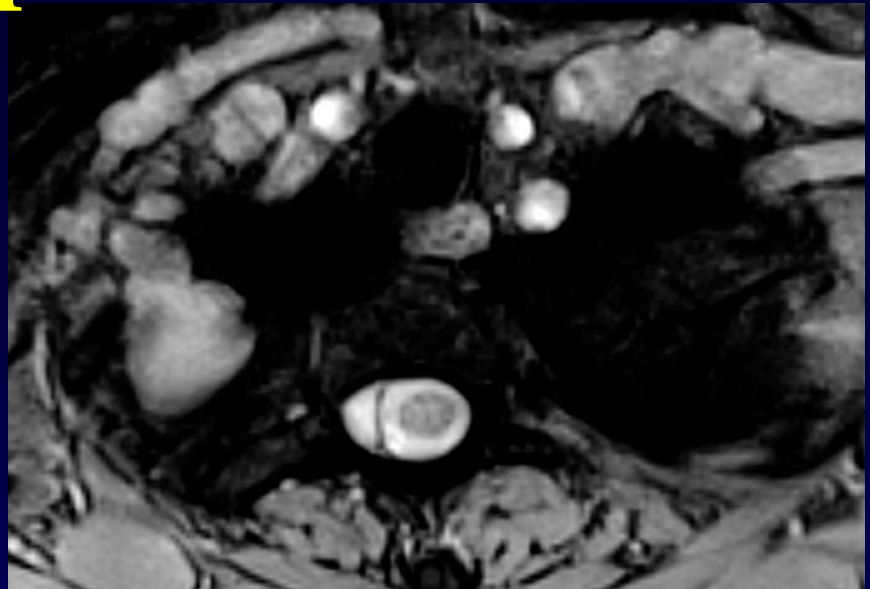


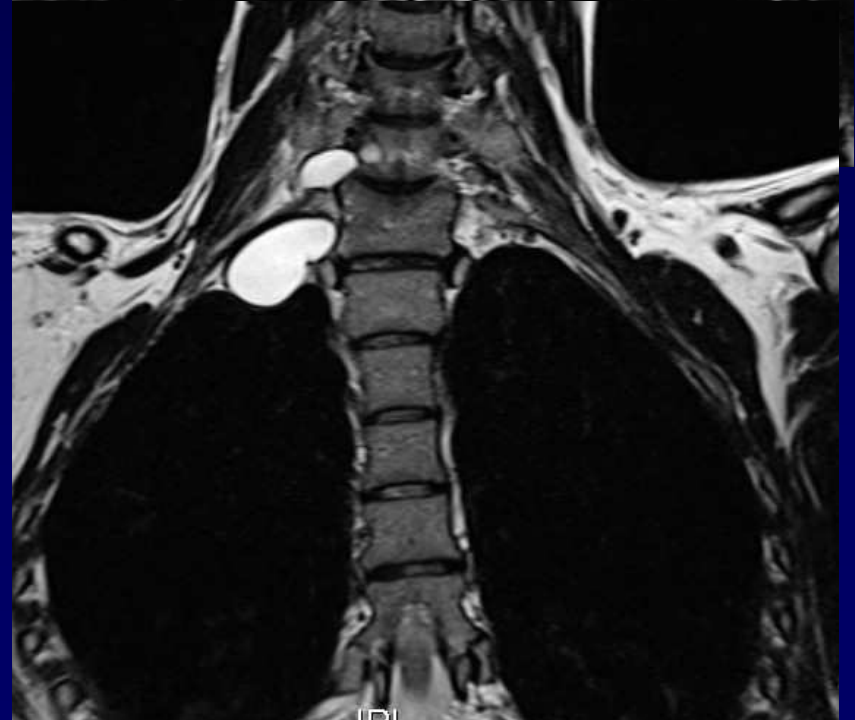
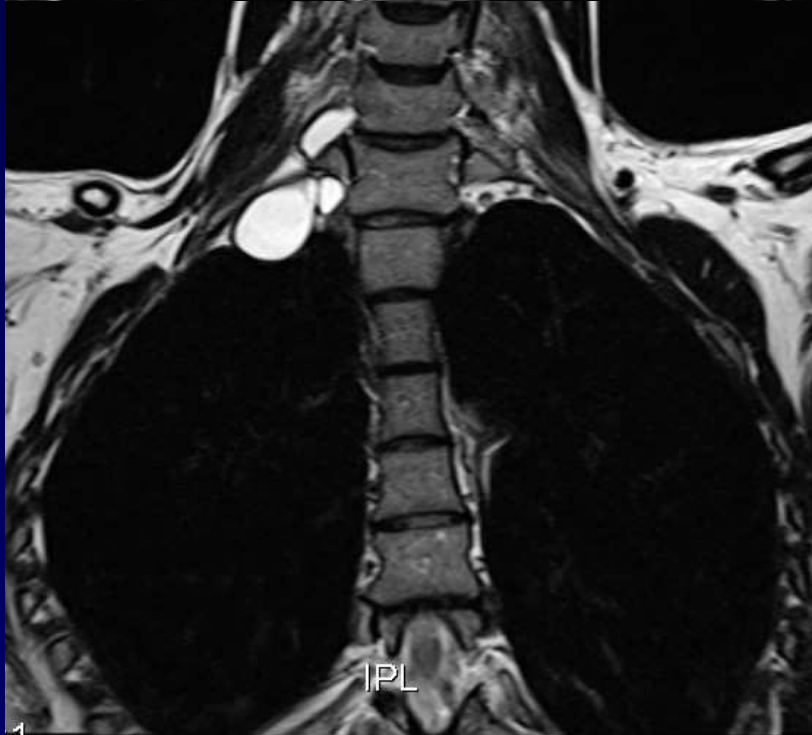
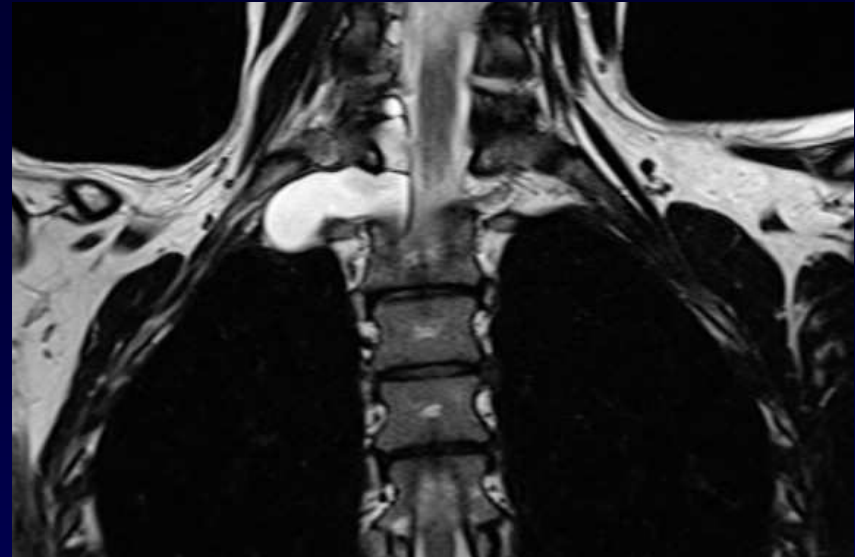
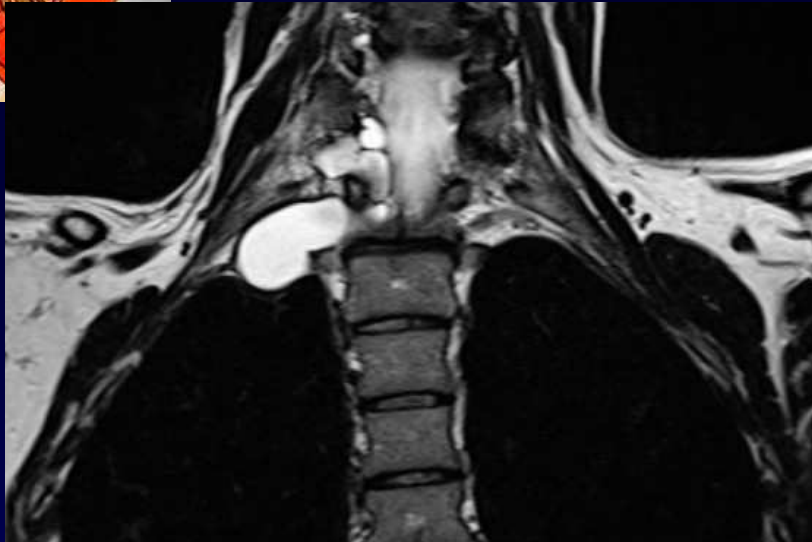


Diagnostic ?



IRM





1

IPL



Diagnostic ?



Diagnostic

Radiculocèles

VS

Méningocèles multiples



Discussion

- Anomalie rarement isolée

- Souvent :

Neurofibromatose de Von Recklinghausen

- Malformations vertébrales

- Spina bifida

- Post-traumatique :

Avulsion du plexus brachial



Référence

**Maiuri F, Corriero G, Giampaglia F, Simonetti L.
Lateral thoracic meningocele.**

Surg Neurol. 1986 Oct; 26(4) : 409 - 412.