

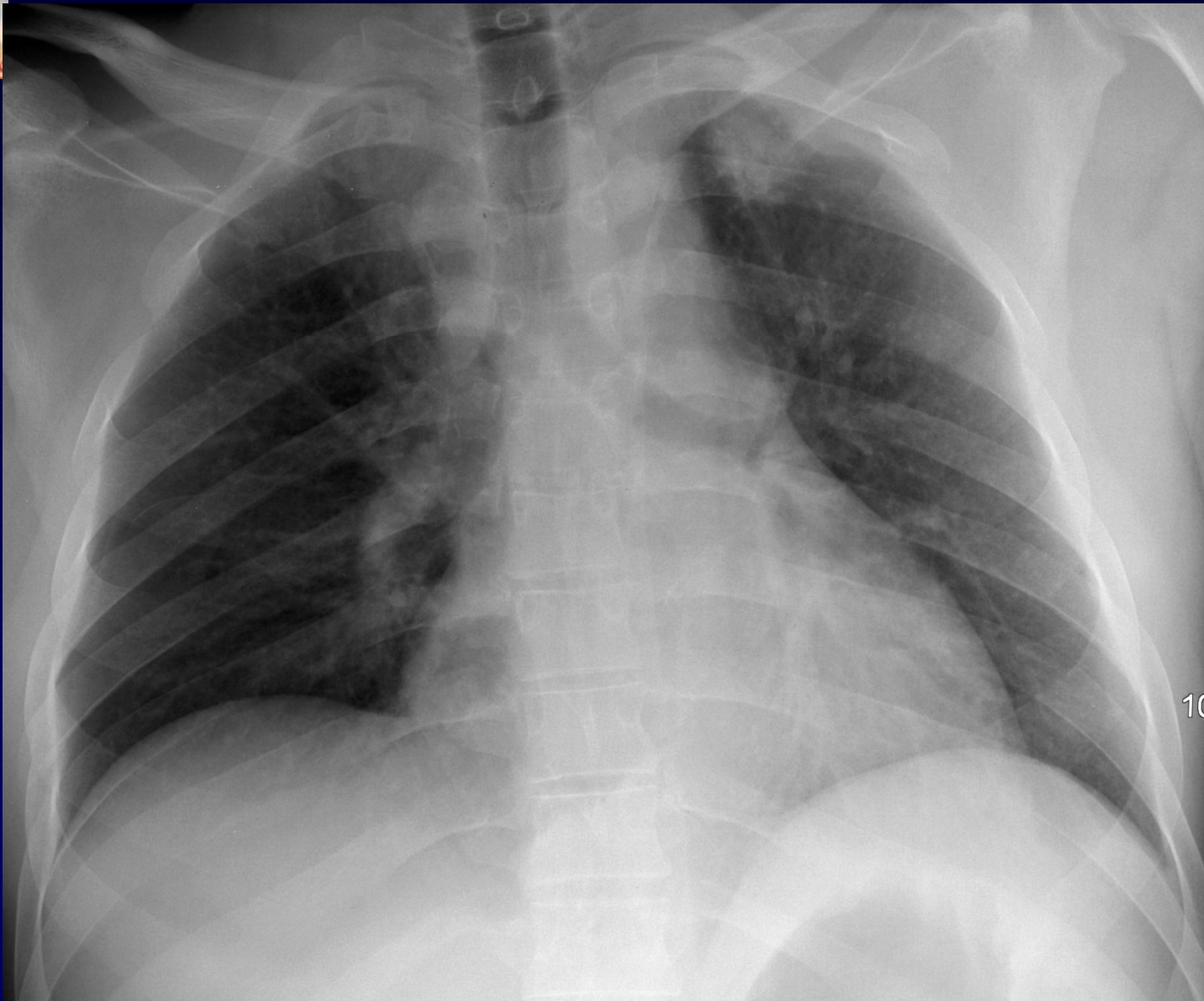


**L Metge**

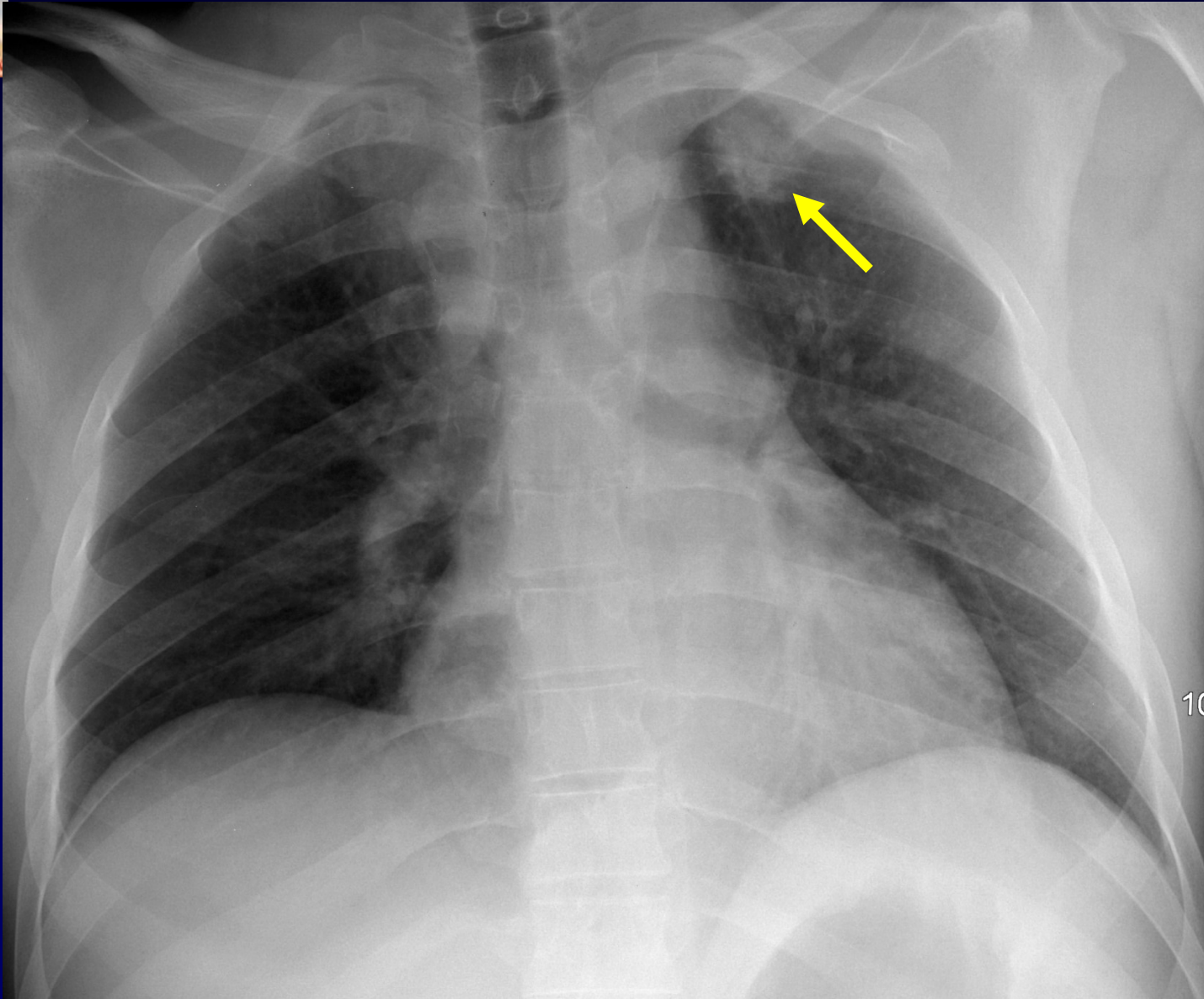
Homme de 48 ans

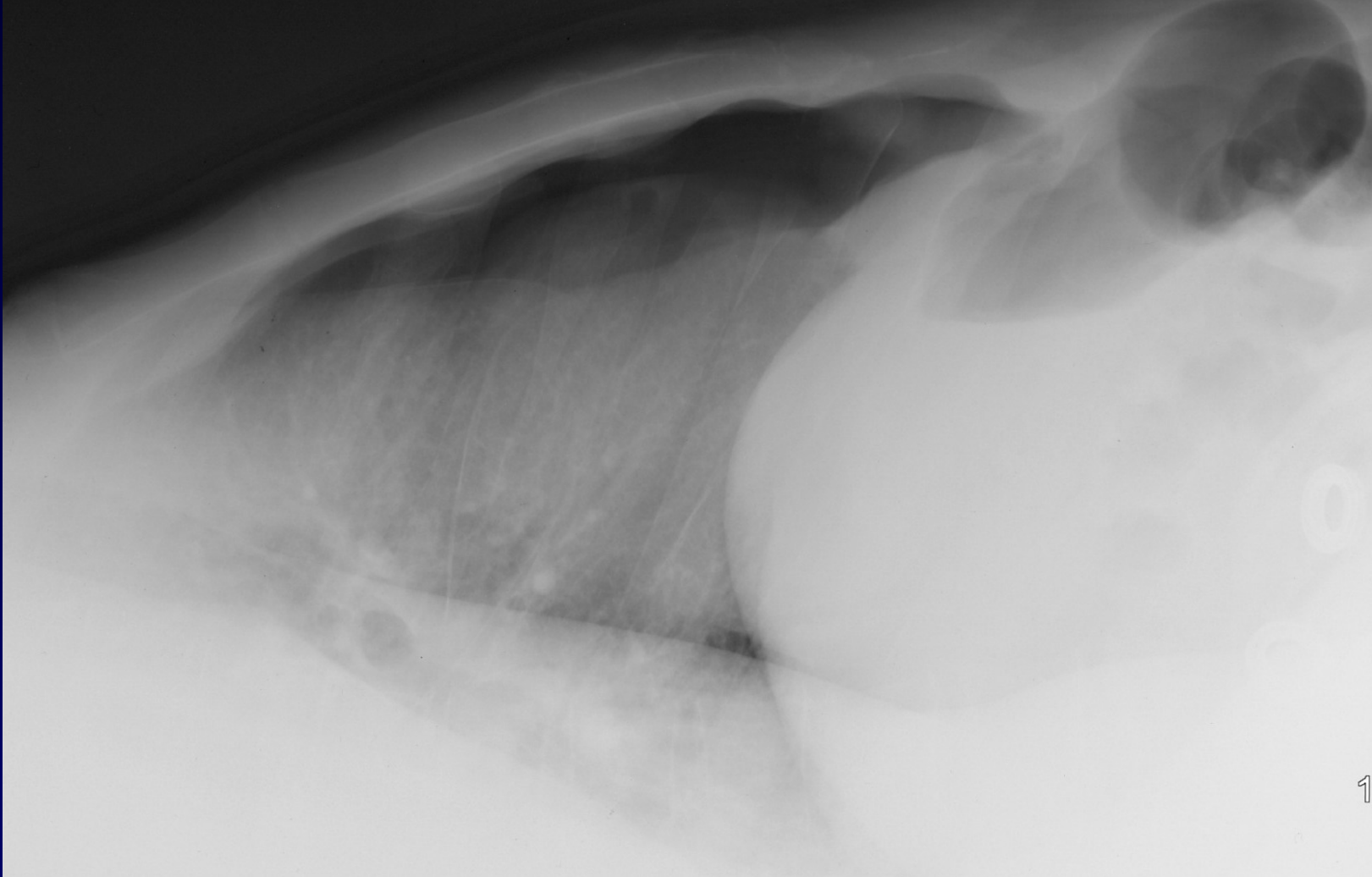
AVP (véhicule léger contre platane)

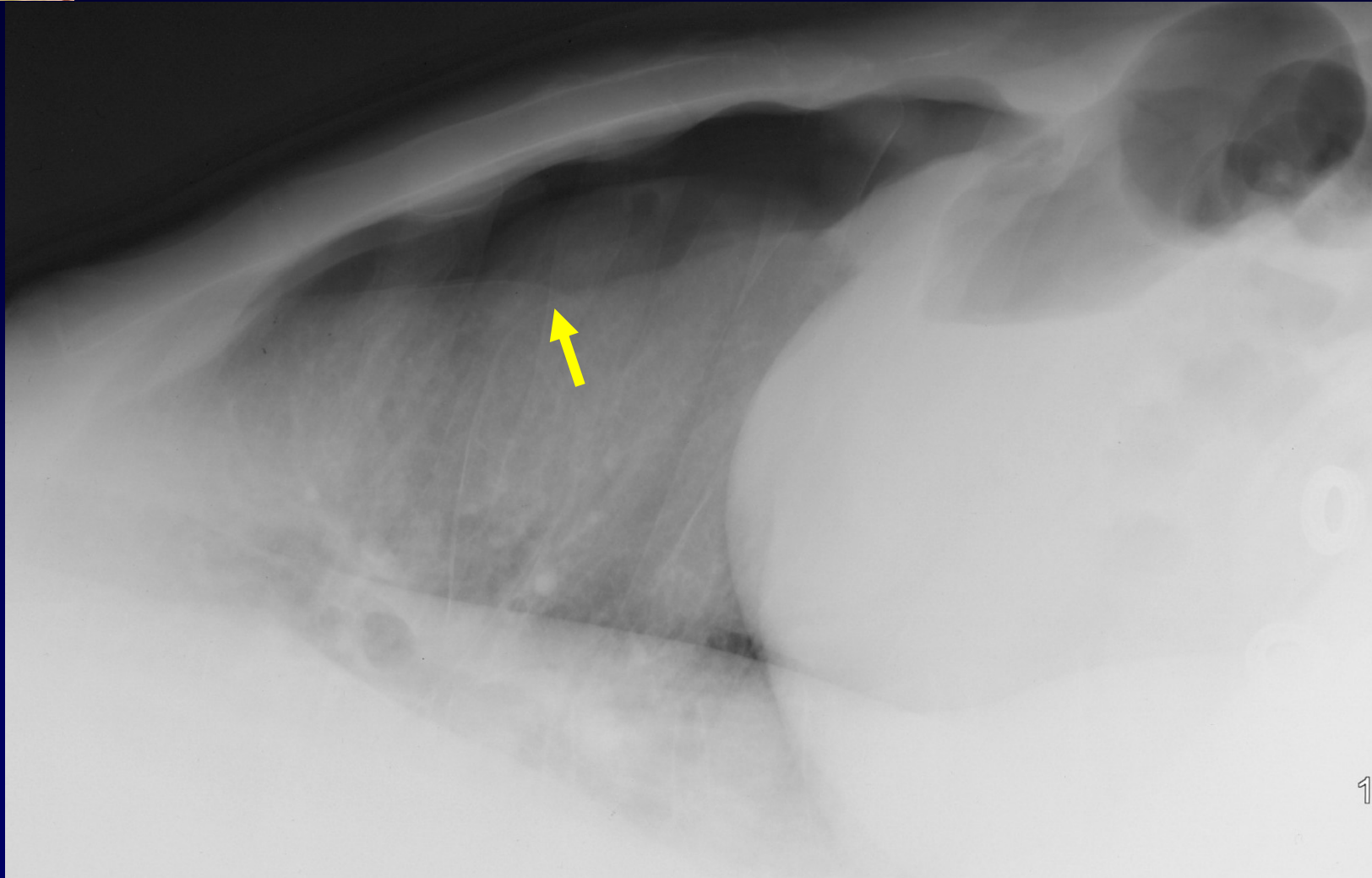
Luxation de la hanche droite et fracture du cotyle D



10









**Diagnostic ?**



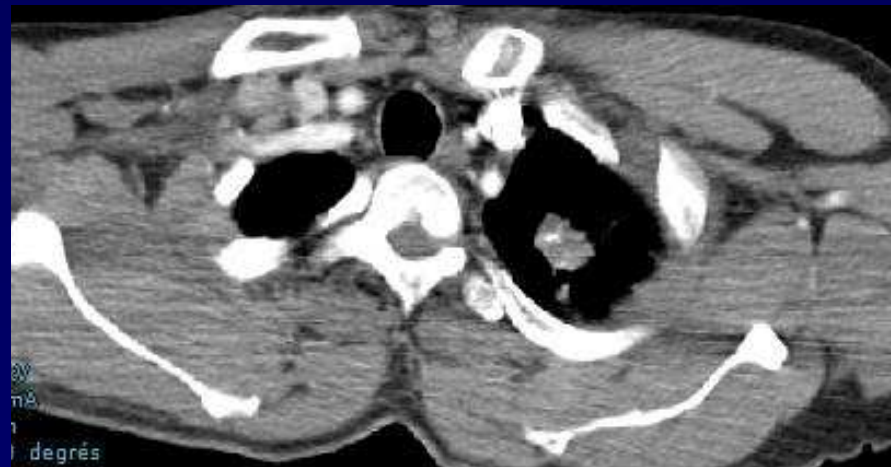
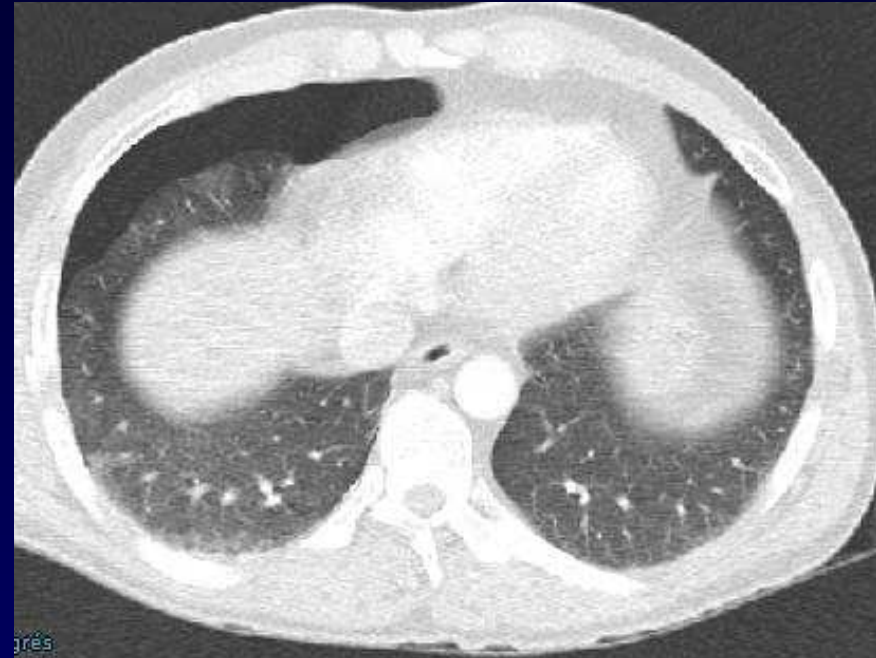
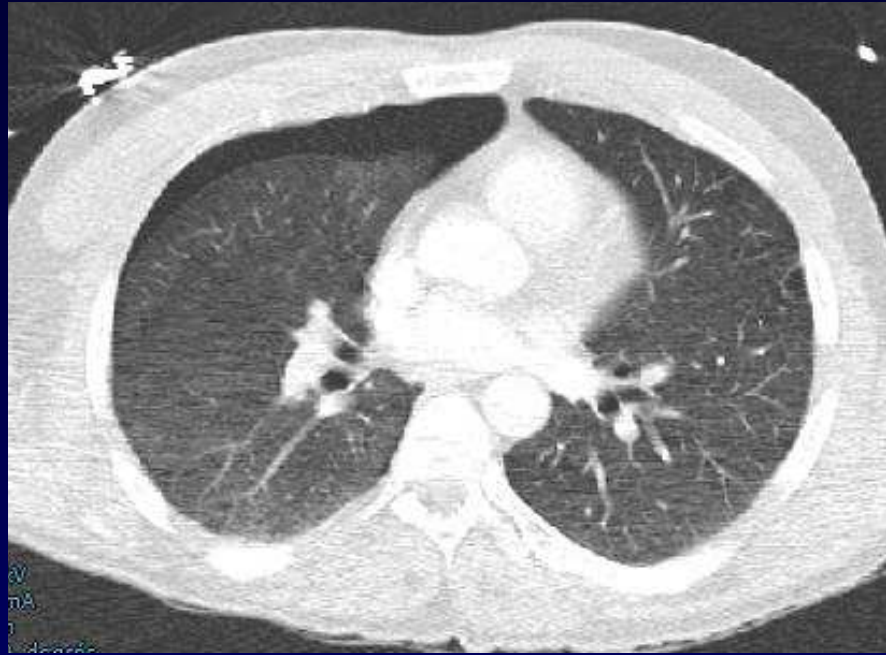
# Diagnostic

**Pneumothorax droit**

**Nodule parenchymateux apical gauche de  
découverte fortuite**

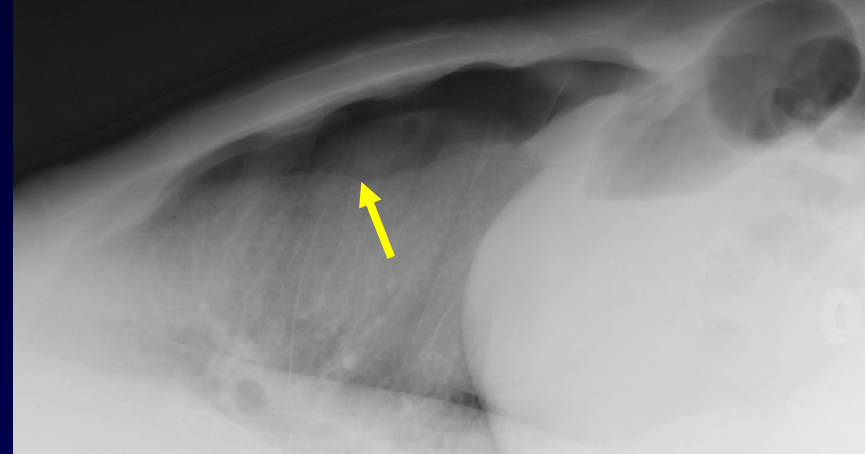


# Discussion





## Discussion-Point fort



- Profil rayon horizontal en décubitus pour le diagnostic du pneumothorax
- L'indentation de la petite scissure signe le pneumothorax droit