

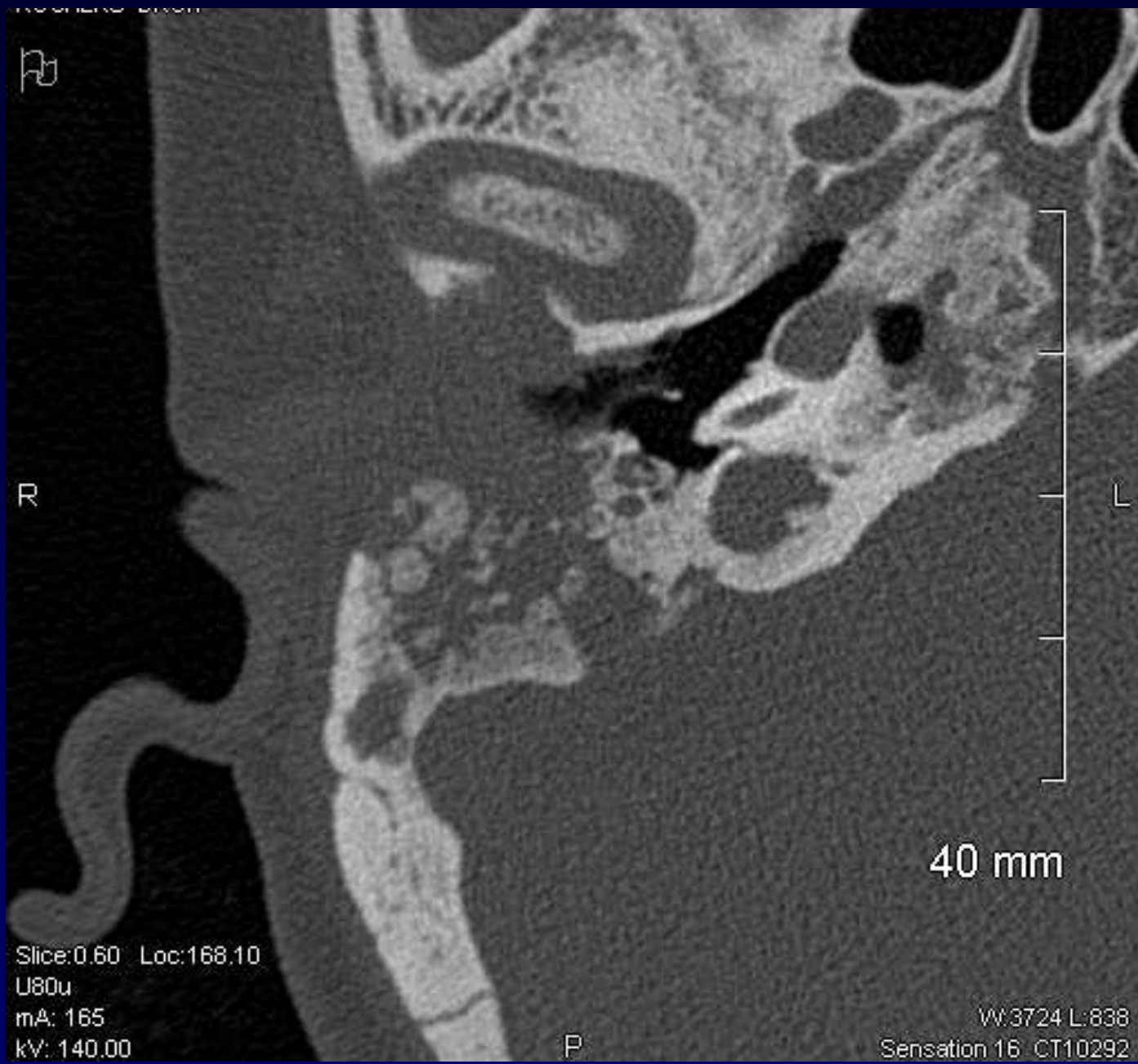


E.DUGERT - J.GIRON - P.FAJADET

Femme de 29 ans,
surdité récente bilatérale !

TDM neuro-ORL

Tabagisme « lourd »





ROCHERS DROIT



R

Slice: 0.60 Loc: 171.40
U80u
mA: 165
kV: 140.00

40 mm

P

W: 3724
Sensation 16 CT

AXIAL ROCHER GAUCHE



R

40 mm

P

Slice: 0.60
U80u
kV: 140.00

W: 3724 L: 838
Sensation 16 CT10292

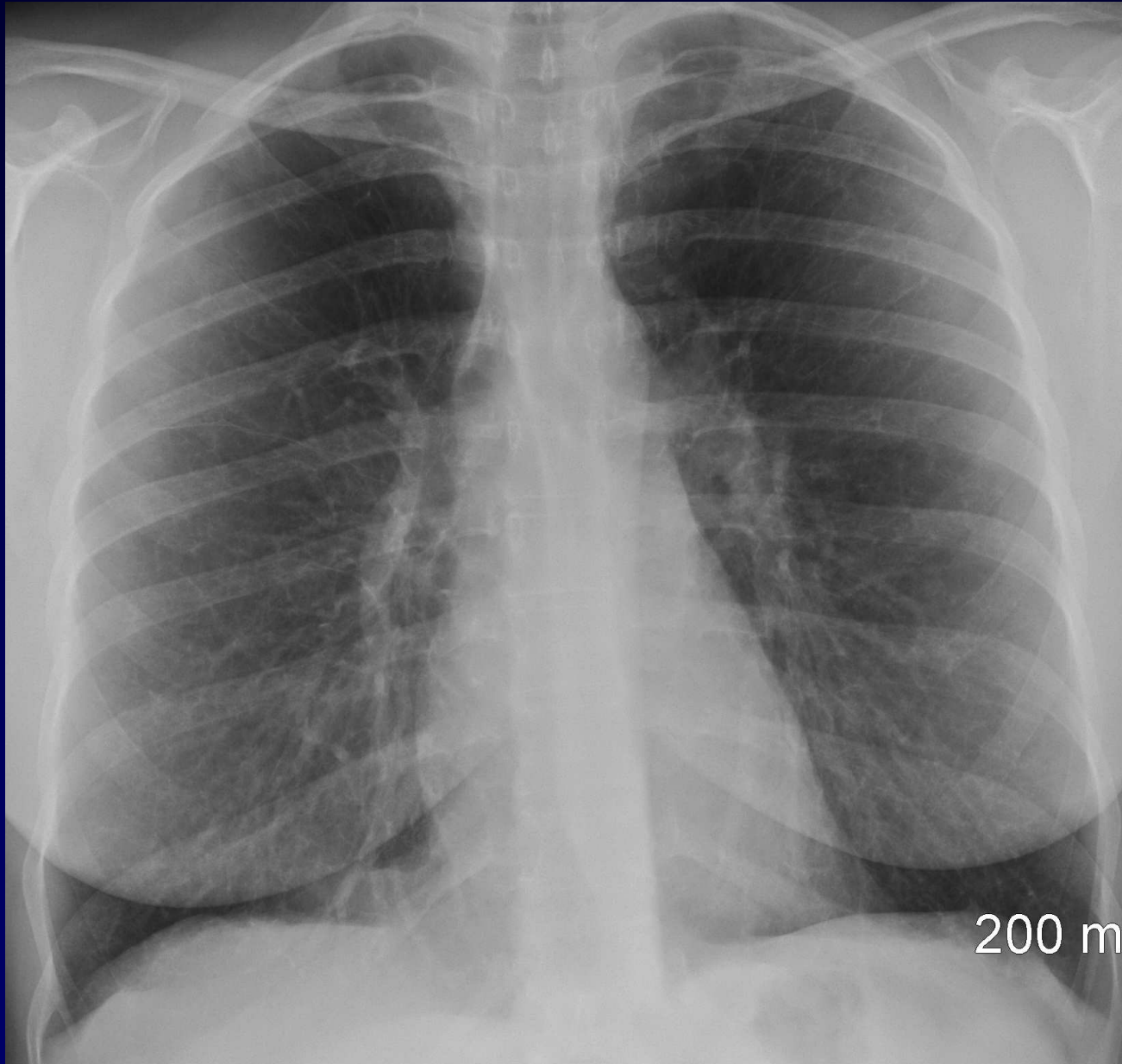


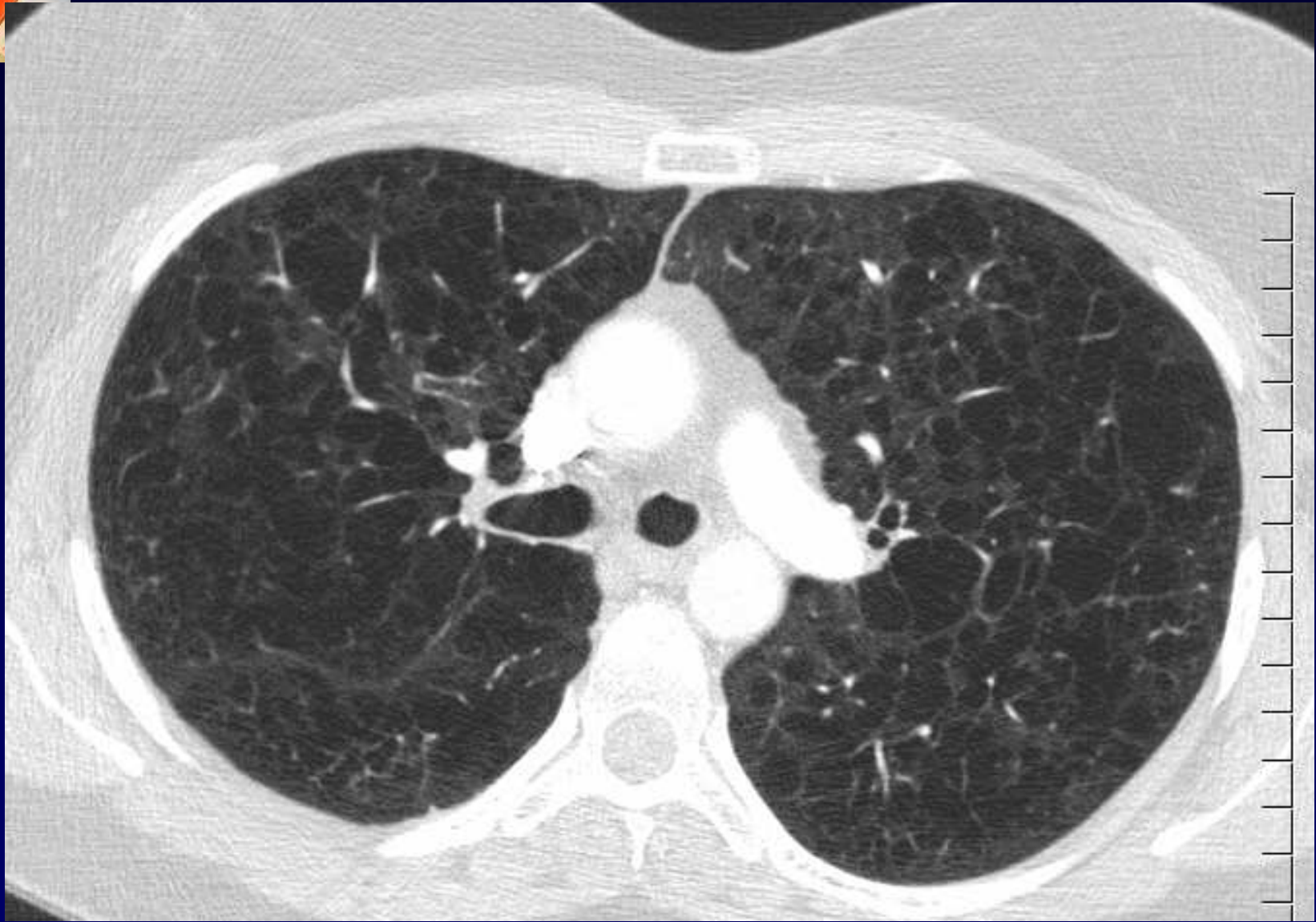
Diagnostic ?

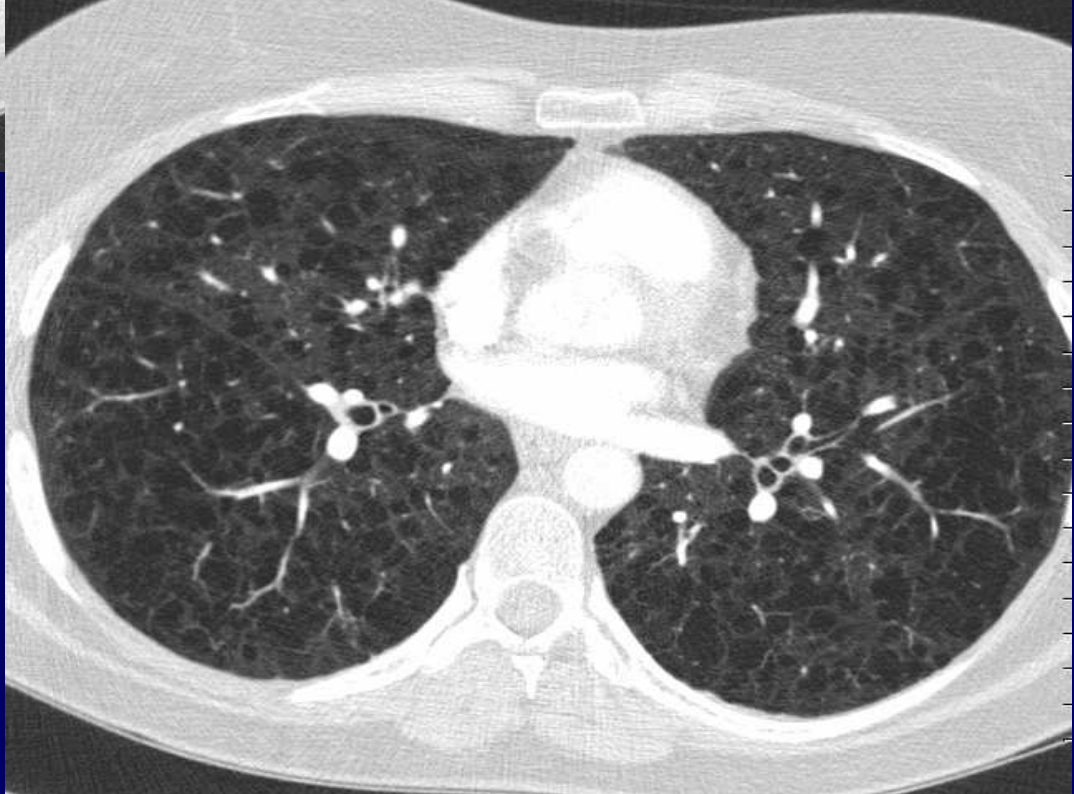
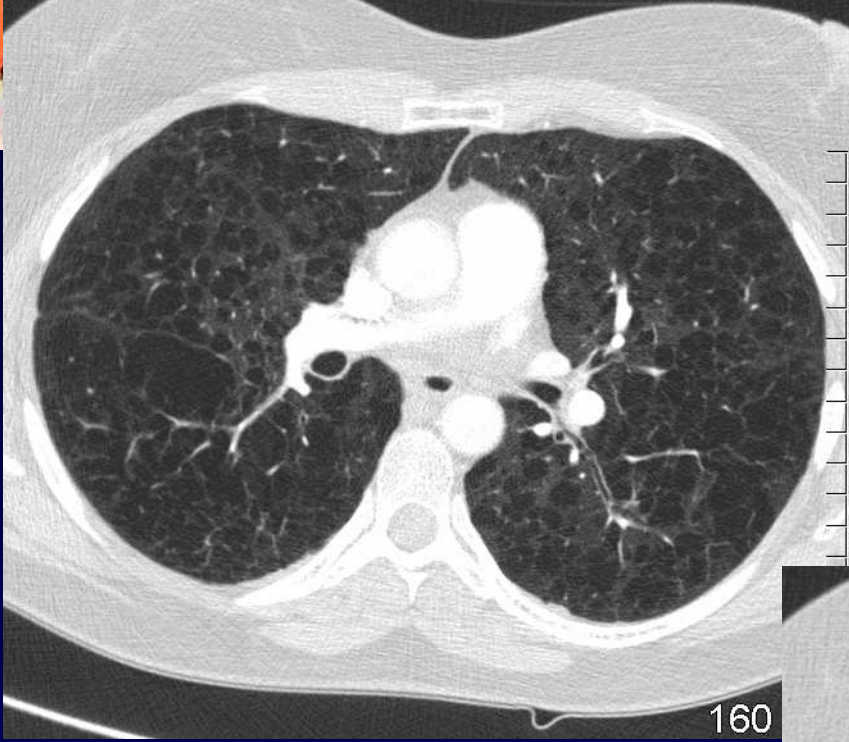


Diagnostic ?

Avec RT et TDM Thorax ?









#1006 24-Nov-2008 11:59 Gauche
Debout





Diagnostic

Histiocytose X ...ou plutôt :

- Granulome Eosinophile /rocher
- ...et / fémur
- Granulomatose de Langherans / poumons
- (forme tardive « en dentelle »)