



CONGRÈS

**Imagerie Appliquée
à la Pratique Pneumologique**



13 & 14 2019
SEPTEMBRE
TOULOUSE

LA BRONCHE PLEINE

Dr Saoussen Hantous-Zannad



La Bronche pleine

- Hantise : tumeur maligne
- Autres étiologies : tumorales bénignes ou autres
- Clinique ++
- Fibroscopie parfois trompeuse
- Sémiologie TDM :



Calibre

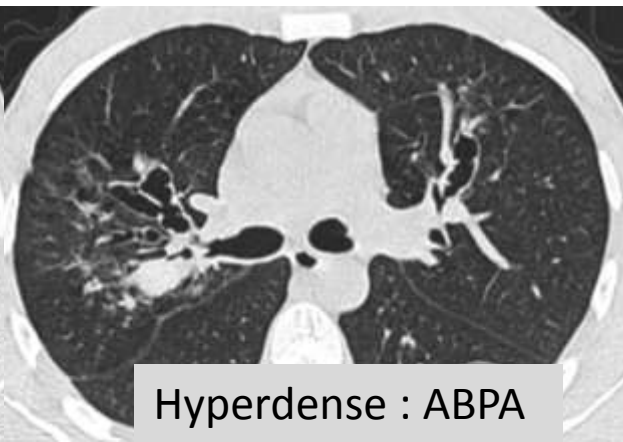
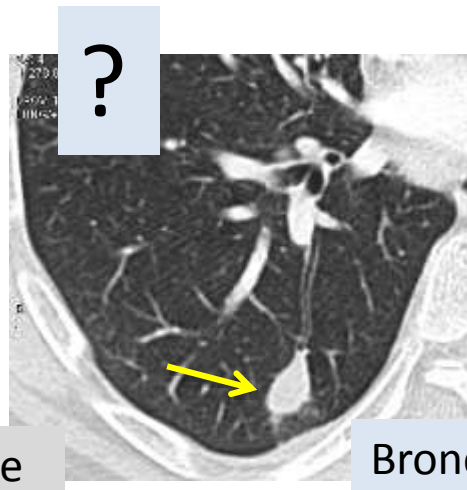
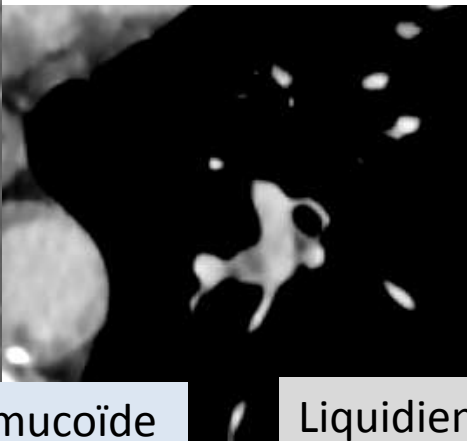
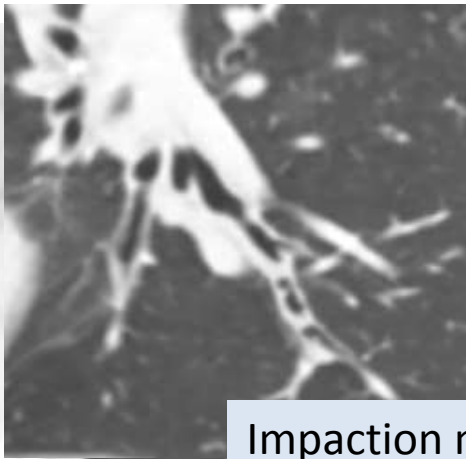
Densité

Prise de contraste

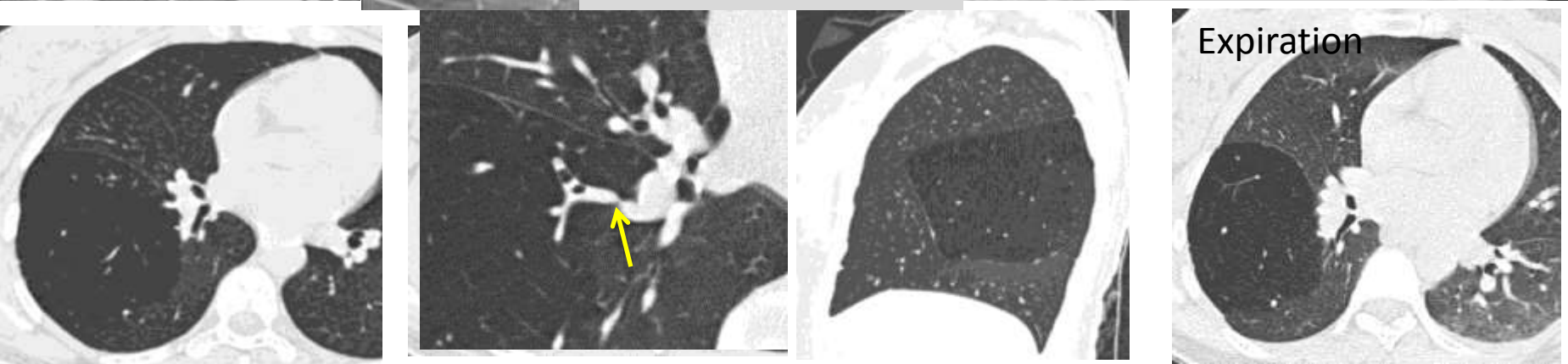
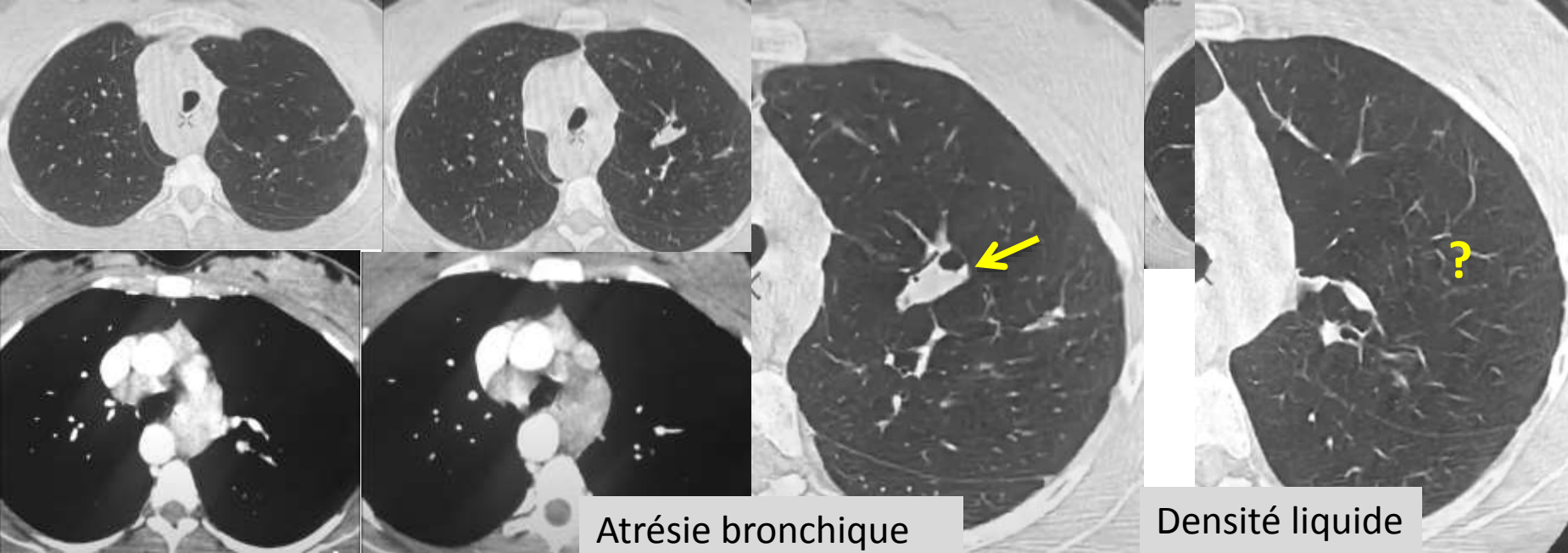
Paroi

Lésions associées

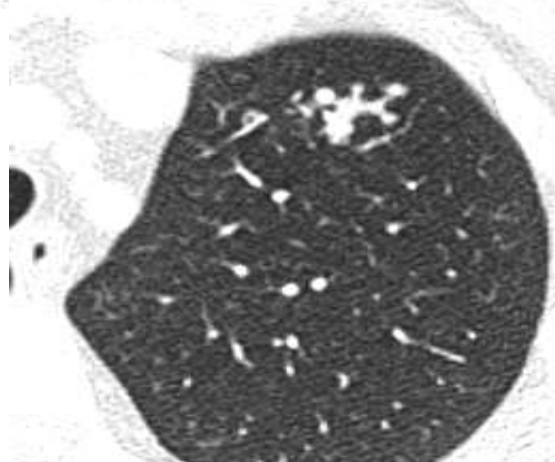
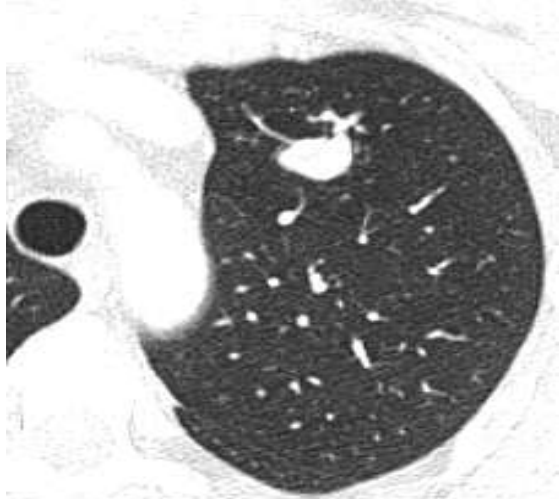
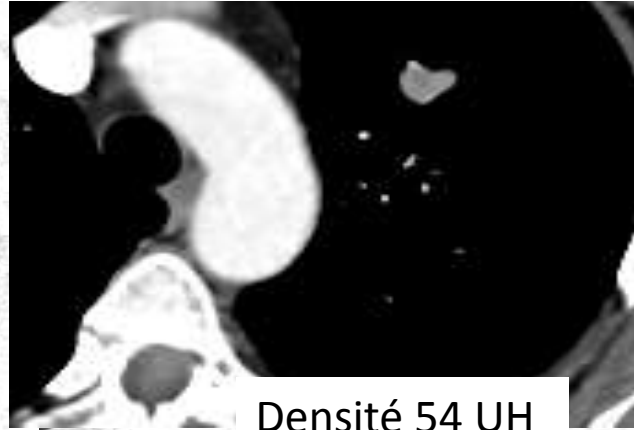
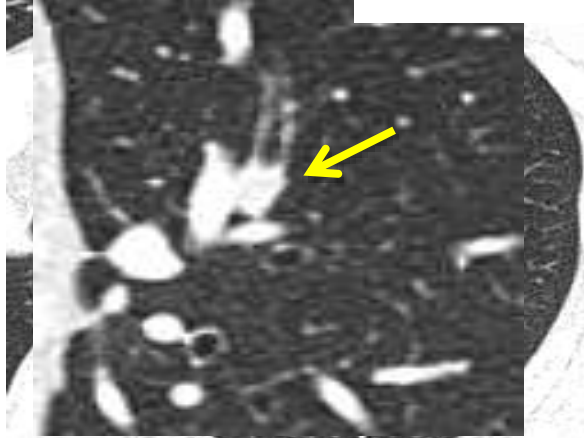
DENSITÉ ?



Hyperdense : ABPA



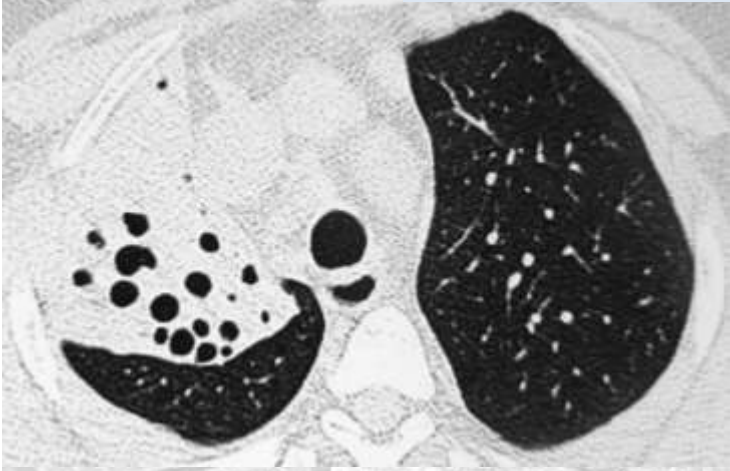
Femme de 60 ans , ATCD de mélanome cutané traité



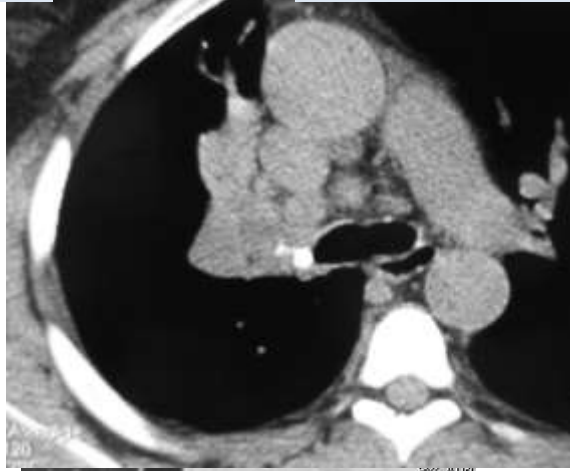
Métastase mélanome

Métastases endobronchiques : rares
Sein, rein, colon, mélanome, thyroïde
Rarement révélatrices,
souvent associées à des méta pulmonaires

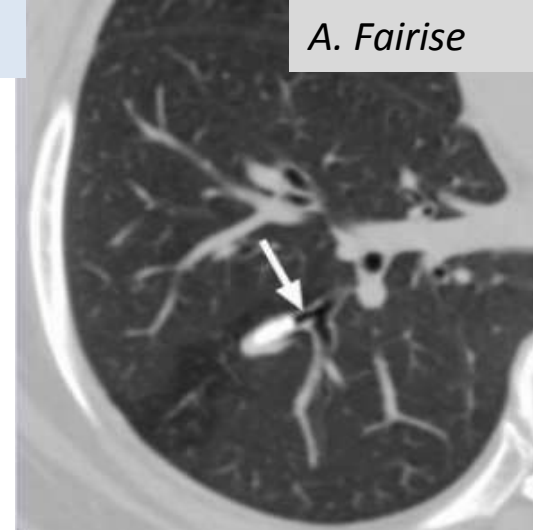
Densité calcique



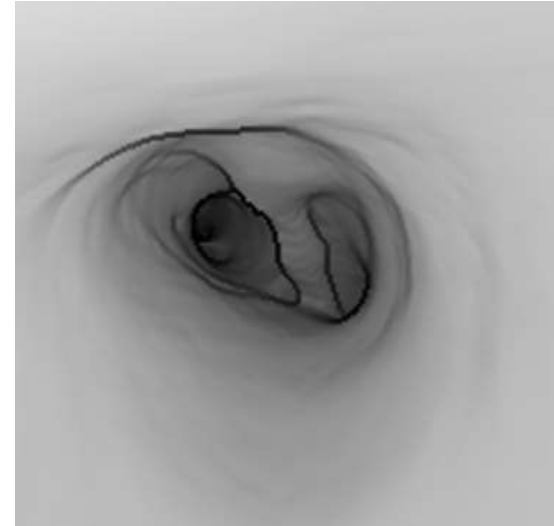
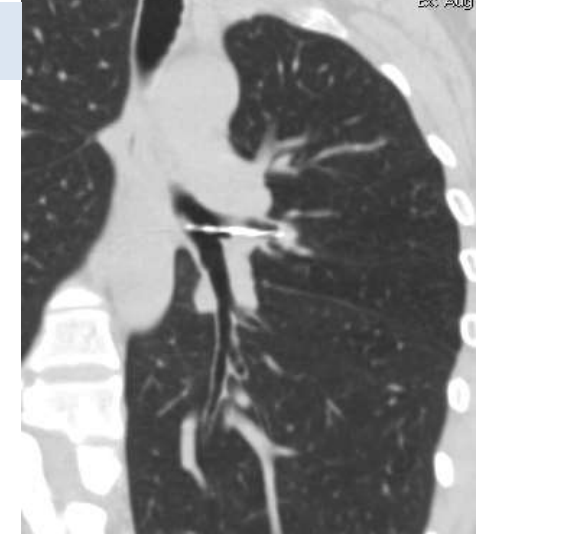
Broncholithiase



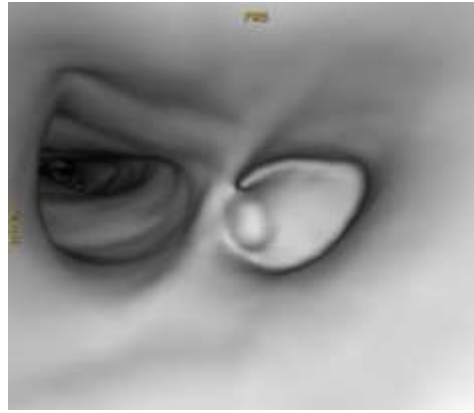
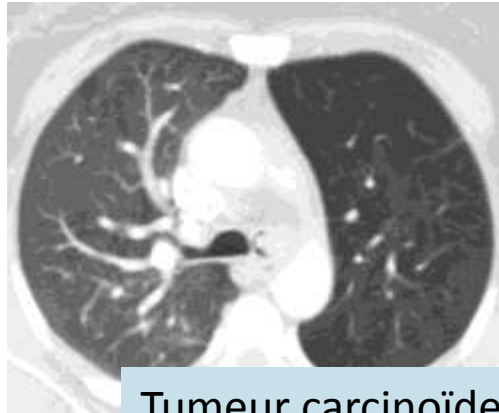
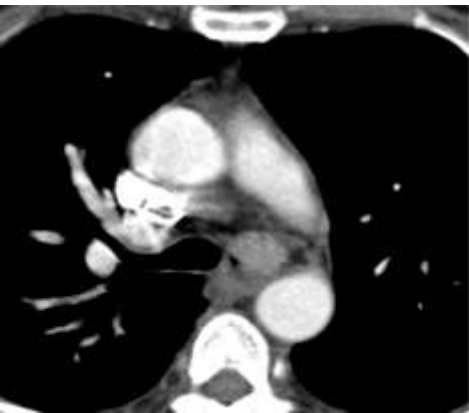
A. Fairise



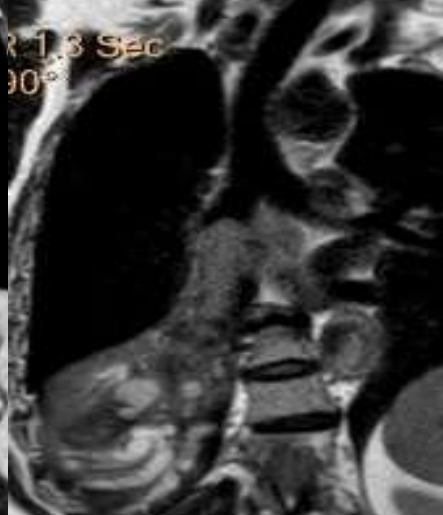
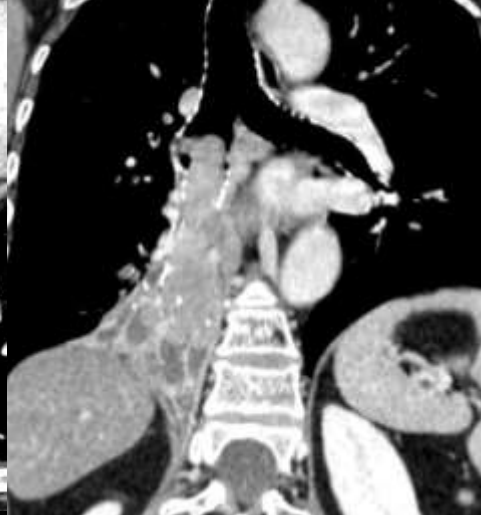
Densité métallique



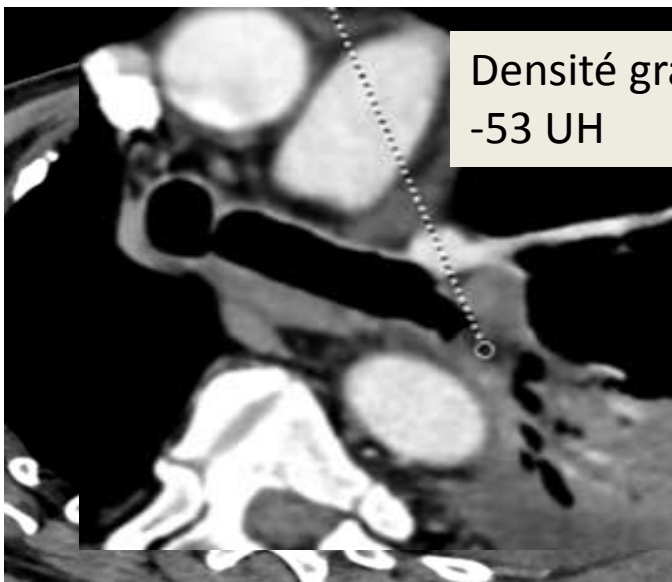
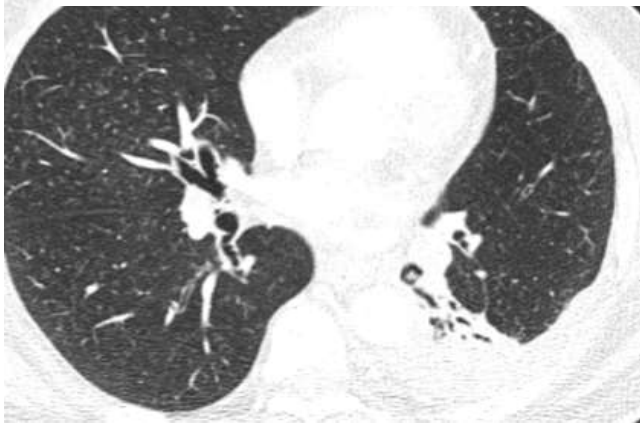
Femme de 52 ans , pleuro pneumopathie gauche trainante , fibro : bourgeon obstruant totalement le TSG



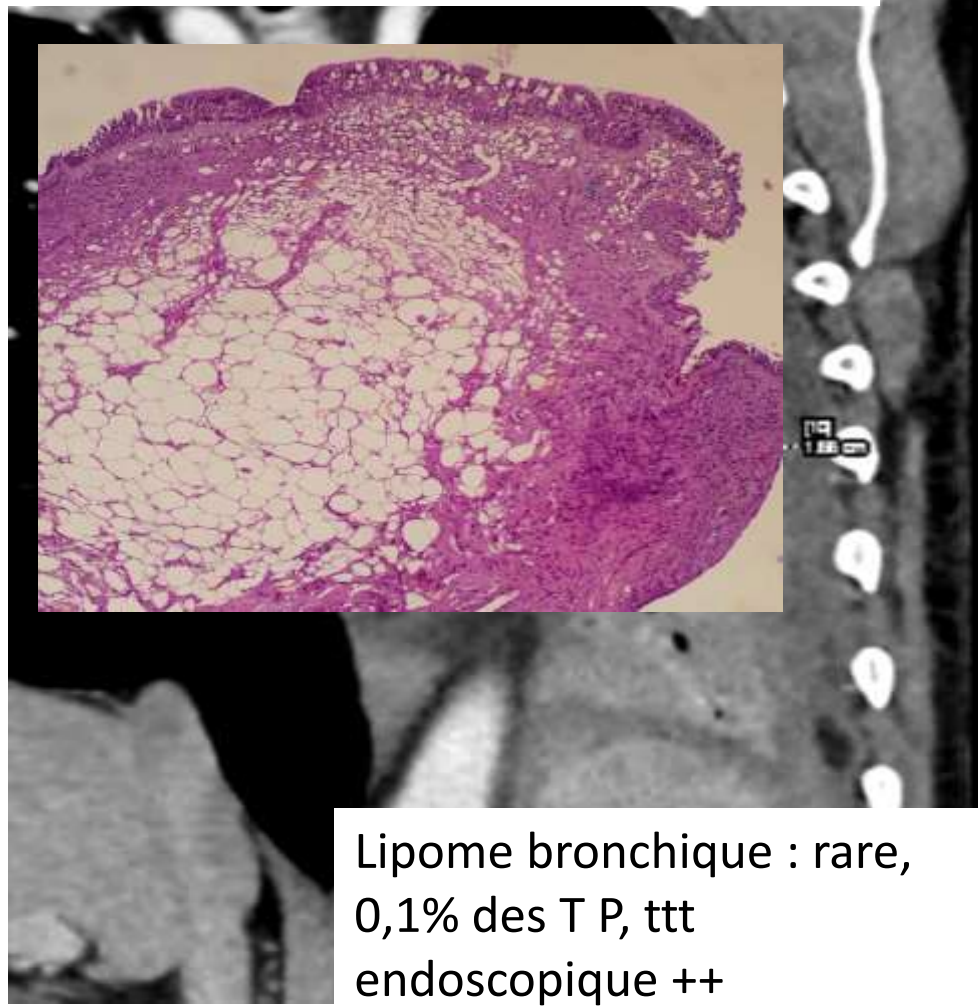
Tumeur carcinoïde typique



Homme de 45 ans , toux, pneumopathie à répétition , Rx Thorax : collapsus du LIG



Densité grasseuse
-53 UH

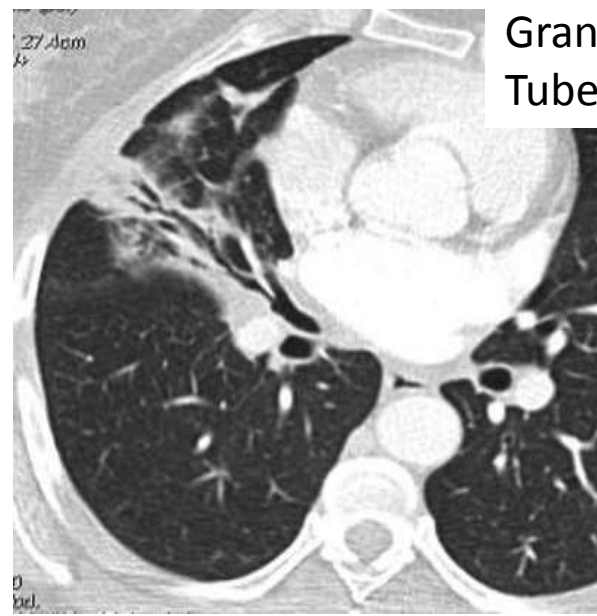
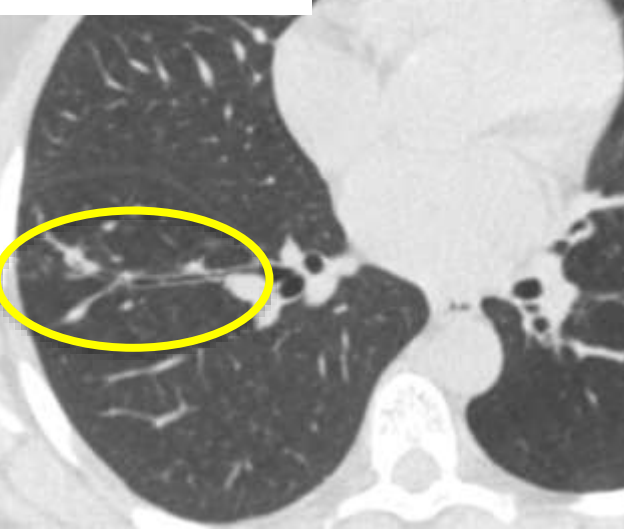


Lipome bronchique : rare,
0,1% des T P, ttt
endoscopique ++



Tumeur
carcinoïde

Granulome
sarcoidose



Granulome
Tuberculose





La Bronche pleine

➤ Regardez les bronches!

Calibre

Densité

Prise de contraste

Paroi

Lésions associées