



Un signe, un destin



13 Septembre 2019



Quand la bulle se remplit

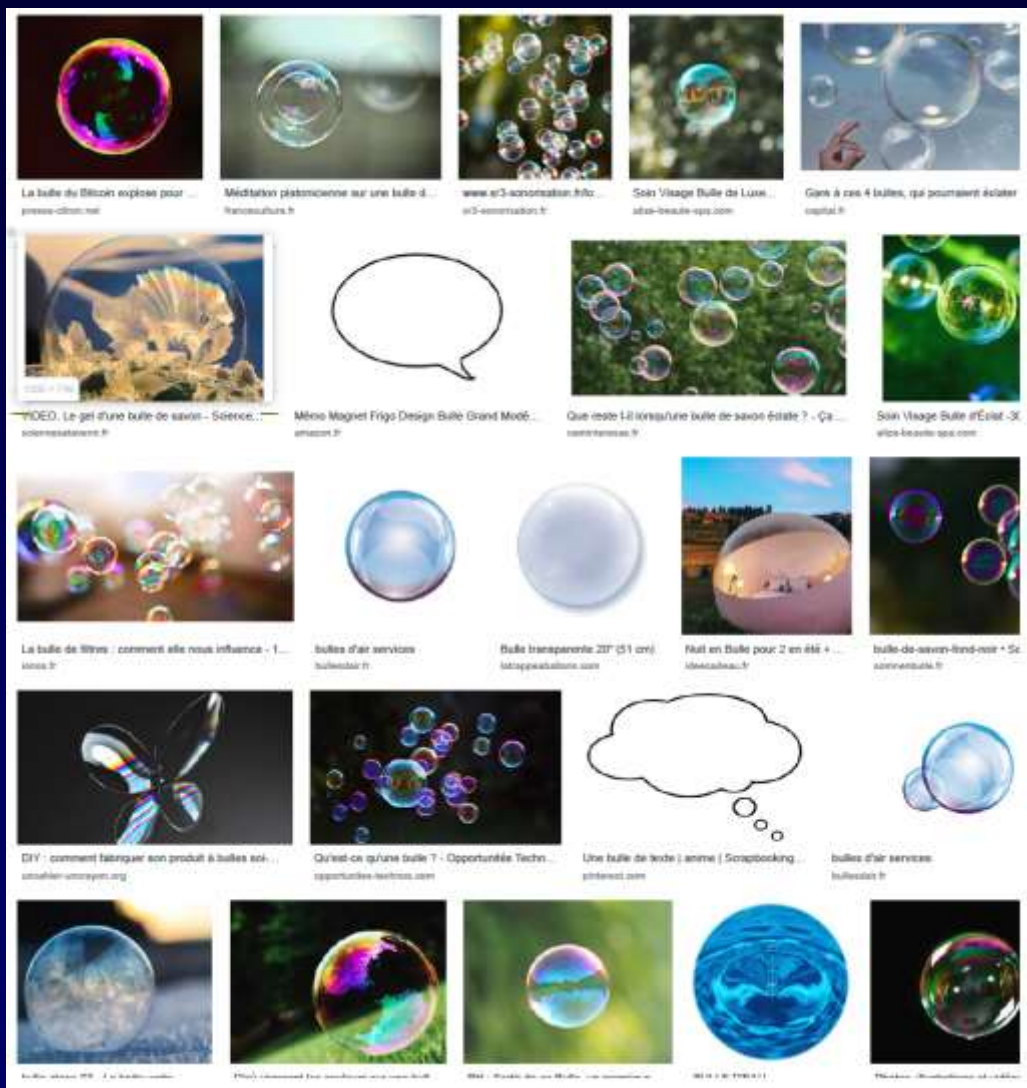
A.Khalil (*Paris*), J.Giron (*Toulouse*)

Il faut
googliser





Recherche
 google.com:
Bulle



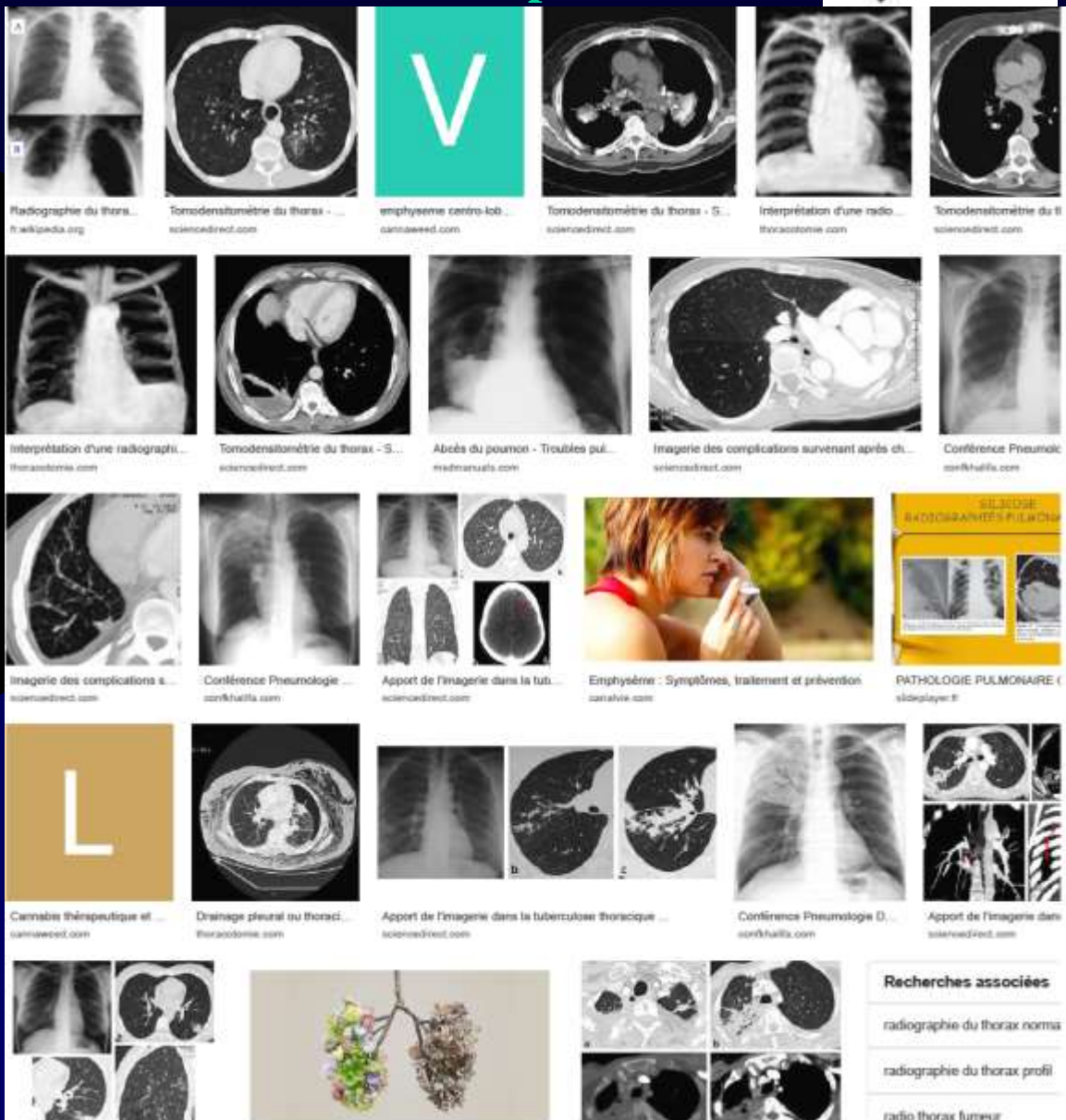


Recherche
google.com:
**Bulle d'emphysème
scanner**





Recherche
 google.com:
**Bulle d'emphysème
 scanner qui se
 remplit**





Recherche pubmed.com:

B
C

11. Zhu C, Chen S, Chen B, Wu S, Xiao-Sarunoh W, Cai K, Shen J, Yang C. Thoracoscopic Treatment of Giant Pulmonary Bullae. *J Surg Res.* 2019 Jun 10;241:206-212. doi: 10.1016/j.jss.2019.05.009. [Epub ahead of print]. PMID: 31193345.

12. Peitte A, Hashibe H, Takahira S, Kitayama M, Tsubo T, Hirota K. [Difficult respiratory management in a patient with bilateral giant bullae]. *Maatsu.* 2009 Oct;38(10):1274-7. Japanese. PMID: 19882232.

13. Ochi S, Sebota T, Sugihara T, Ogawa J, Komuro Y, Hironuma T, Higashino S. A case report of rhinorrhea with asthma complicated with rapidly progressive interstitial pneumonia, multiple bullae and pneumothorax, which was successfully treated with tacrolimus. *Wheeze Shinkei* [Jpn J Asthma]. 2009 Feb;31(1):62-7. PMID: 18118444.

14. Chen CH, Foray MC, Li ME, Fan WC, Wu CP. Hemorrhage from an enlarged emphysematous bulla during commercial air travel. *Aviat space Environ med.* 2006 Dec;77(12):1275-7. PMID: 17183925.

15. Hasegawa M, Hasegawa Y, Furukawa A, Aoyama M, Hasegawa M, Chavuzhukodan S, Hasegawa M, Hasegawa M, Hasegawa M, Hasegawa M, Hasegawa M, Hasegawa M. Pulmonary complications in primary hyperparathyroidism: a survey by high resolution CT scan. *Respir Med.* 2006 Jun;100(6):718-24. PMID: 16815374.

16. Martinez FJ, Chang A, Park SH, Lee CP. Surgical therapy for chronic obstructive pulmonary disease. *Semin Respir Crit Care Med.* 2009 Apr;26(2):167-81. PMID: 18889495.

17. Suh SF, Ynal JD, Chen MC, Yang PC, Lee CJ. Video-assisted thoracic surgery for spontaneous pneumothorax in 389 cases. *Int Surg.* 2004 Oct-Dec;89(4):185-9. PMID: 15738094.

18. De Giacomo T, Mendias SA, Venza F, Hewitt M, Herculano E, Sobrin J, Filice M, Collini CP. Wedge resection is comparable to lung volume reduction in patients with end-stage emphysema. *Eur J Cardiothorac Surg.* 2002 Sep;22(5):551-62. PMID: 12208725.

19. Takizawa S, Tokuda K, Otsuki E, Akiyama E, Sobayashi M, Shinzaka Y. Chronological changes in cerebral air embolism that occurred during continuous drainage of infected lung bullae. *Chest.* 2000 Sep-Oct;107(5):1409-12. PMID: 10973028.

20. Gynohata M, Matsuura A, Inoue M, Nonjo S, Ichi E, Maki T. Are experimental bullae with broad bases suitable for ablation? *Jpn J Thorac Cardiovasc Surg.* 1999 Oct;47(12):588-91. PMID: 10450315.

21. De Giacomo T, Venza F, Mendias SA, Della Rocca G, Cincotta AM, Klossi G, Collini CP. Video-assisted thoracoscopic treatment of giant bullae associated with emphysema. *Eur J Cardiothorac Surg.* 1999 Jun;15(4):753-4. PMID: 736-7.

22. Tachop JH, Brutsche M, Frey JO. Treatment of complicated spontaneous pneumothorax by simple talc pleurodesis under thoracoscopy and local anaesthesia. *Thorax.* 1997 Apr;52(4):329-32. PMID: 9196514; PubMed Central PMCID: PMC1758334.

23. Vaca EJ, Overlieh JP, Daskal CP, Noebel NF. Nursing care of the thoracoscopic lung volume reduction patient. *Am J Crit Care.* 1994 Nov;5(4):412-9. PMID: 8922156.

24. Tanaka H, Imada A, Morikawa T, Shibusawa T, Satoh M, Sekine K, Abe S. Diagnosis of pulmonary lymphangioleiomyomatosis by HRCT is surgically treated spontaneous pneumothorax. *Eur Respir J.* 1995 Nov;8(11):1878-82. PMID: 8620956.

25. Hibel M, Ghoch K. [Open thoracic surgery of giant bullous pulmonary emphysema in adults]. *Kov Mal Respir.* 1985;12(3):299-305. French. PMID: 7542469.

26. Tagliabue M, Merlini L. [Computed tomography in the diagnosis of pulmonary emphysema associated with the adult respiratory distress syndrome]. *Radiol Med.* 1994 Jan-Feb;97(1):2145-52. Italian. PMID: 8128032.

27. Potapenko NA, Shipilin PV. [Surgical treatment of complicated bullous pulmonary emphysema]. *Ukrainian Journal of Radiology and Nuclear Medicine.* 1993 Jul-Aug;(4):19-42. Russian. PMID: 8292396.

28. Lippert HL, Lund O, Blegvad S, Larsen HV. [Treatment of spontaneous pneumothorax. Immediate results and cumulative frequency of recurrence]. *Ugeskr Læger.* 1991 Nov;153(48):3399-402. Danish. PMID: 1853497.

29. Kuhlman JW, Knowles MC, Fishman EK, Gimpelman SA. Premature bullous pulmonary damage in AIDS: CT diagnosis. *Radiology.* 1989 Oct;173(1):23-6. PMID: 2781013.

30. Wang BL, Jenik BF, Kittle CP, Palmer LP. Median sternotomy for synchronous bilateral pulmonary operations. *J Thorac Cardiovasc Surg.* 1980 Jul;60(1):1-7. PMID: 7382524.

31. KAWABE H. [Air embolism of the heart as a complication of interstitial emphysema and emphysematous bullae]. *Pediatr Pol.* 1957 Oct;31(10):1148-52. Polish. PMID: 13527021.



0140181
**Imagerie Appliquée
à la Pratique Pneumologique**



14 Septembre 2019



0140181
**Imagerie Appliquée
à la Pratique Pneumologique**



14 Septembre 2019



Suhail Raouf, MD; Praveen Bondalapati, MD; Ravikanth Vydyula, MD; Jay H. Ryu, MD; Nishant Gupta, MD; Sabiha Raouf, MD; Jeff Galvin, MD; Mark J. Rosen, MD; David Lynch, MD; William Travis, MD; Sanjeev Mehta, MD; Richard Lazzaro, MD; and David Naidich, MD

DOI: <http://dx.doi.org/10.1016/j.chest.2016.04.026>

14 Septembre 2019

TABLE 1] Definitions and Radiographic Features of Conditions Included Under Cystic Lung Disease

Condition	Description	Wall Thickness	Other Features
Cyst (Fig 1A)	A round parenchymal lucency or low-attenuation area exhibiting a well-defined interface with normal lung and usually containing air	Thin-walled (< 2 mm)	Not associated with pulmonary emphysema. May rarely contain fluid or solid material
Bulla (Fig 12)	A rounded focal lucency or area of decreased attenuation measuring >1 cm (usually several centimeters)	Thin-walled, usually < 1 mm	Often accompanied by emphysema in the adjacent lung
Paraseptal emphysema (Fig 13)	Subpleural and peribronchovascular regions of low attenuation separated by intact interlobular septa, sometimes associated with bullae	No walls	Bounded by pleural surface and interlobular septa. Rest of lung architecture preserved. Centrilobular emphysema may be present
Honeycombing (Fig 10)	Closely approximated ring shadows 3-10 mm in diameter, usually subpleural with well-defined walls	1-3 mm	Late stage of various lung diseases, with complete loss of acinar architecture

The radiologic definitions have been taken from the Fleischner Society (Glossary of terms for thoracic imaging. Radiology. 2008).²²



Emphysème bulleux

Parenchyme tassé au contact



Hors sujet

**... compliqué de
pneumothorax**



Une paroi qui s'épaissit

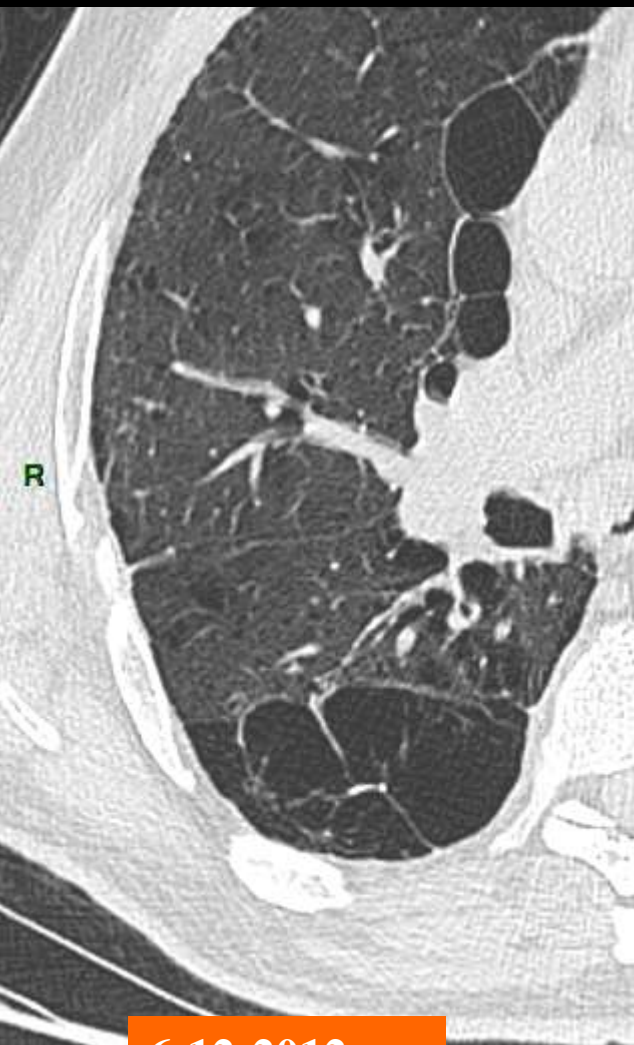


014181
Imagerie Appliquée
à la Pratique Pneumologique

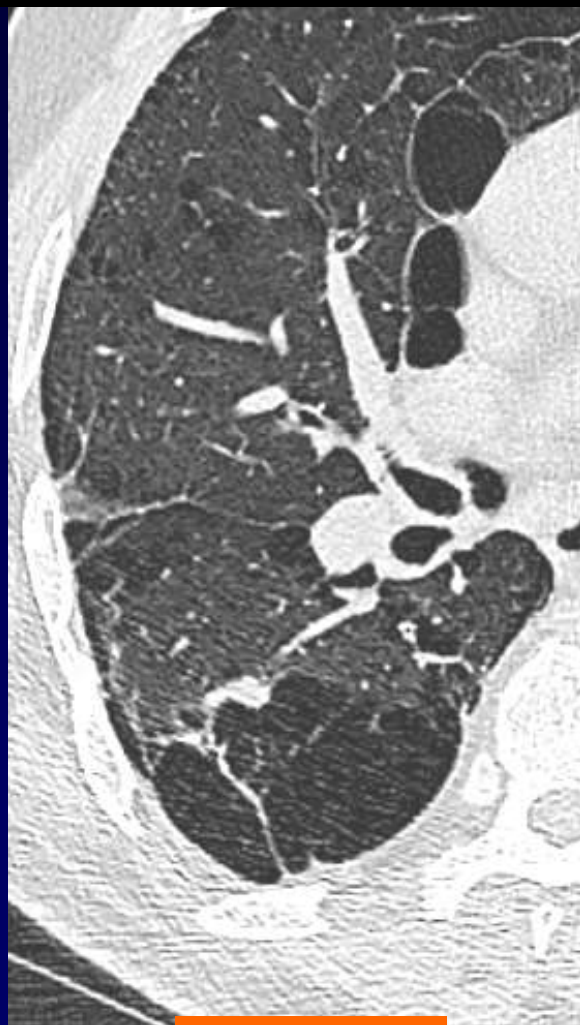


Septembre 2019

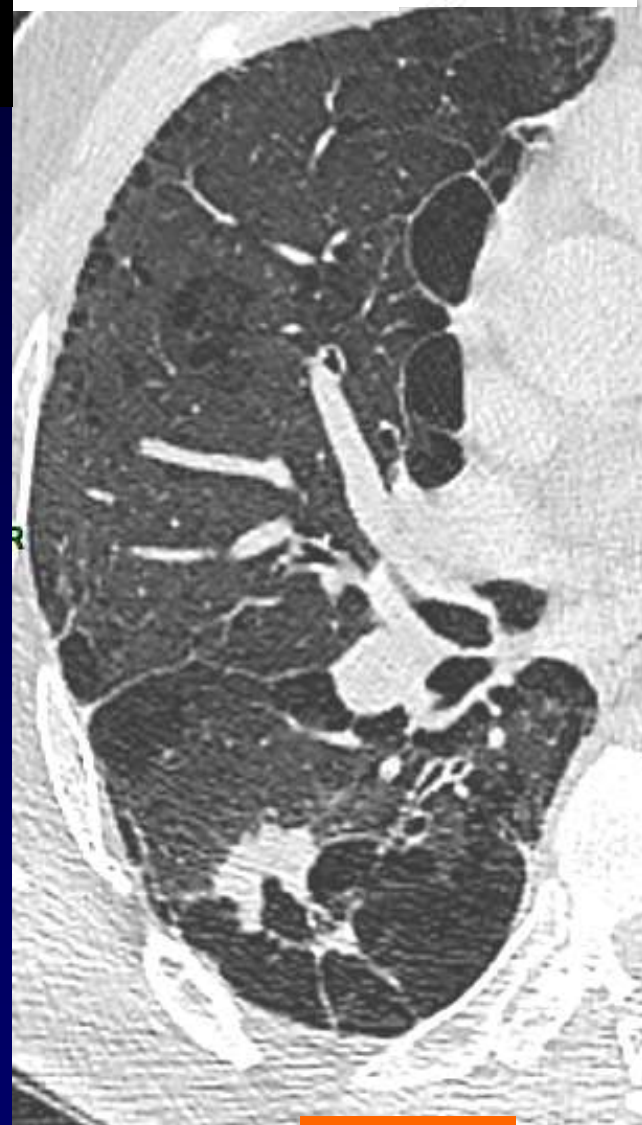
Mr D; âgé de 65 ans, fumeur (65 PA)
ATCD: double chirurgie de réduction d'emphysème à droite
et à gauche) → Suivi



6-12-2012



3-2-2014

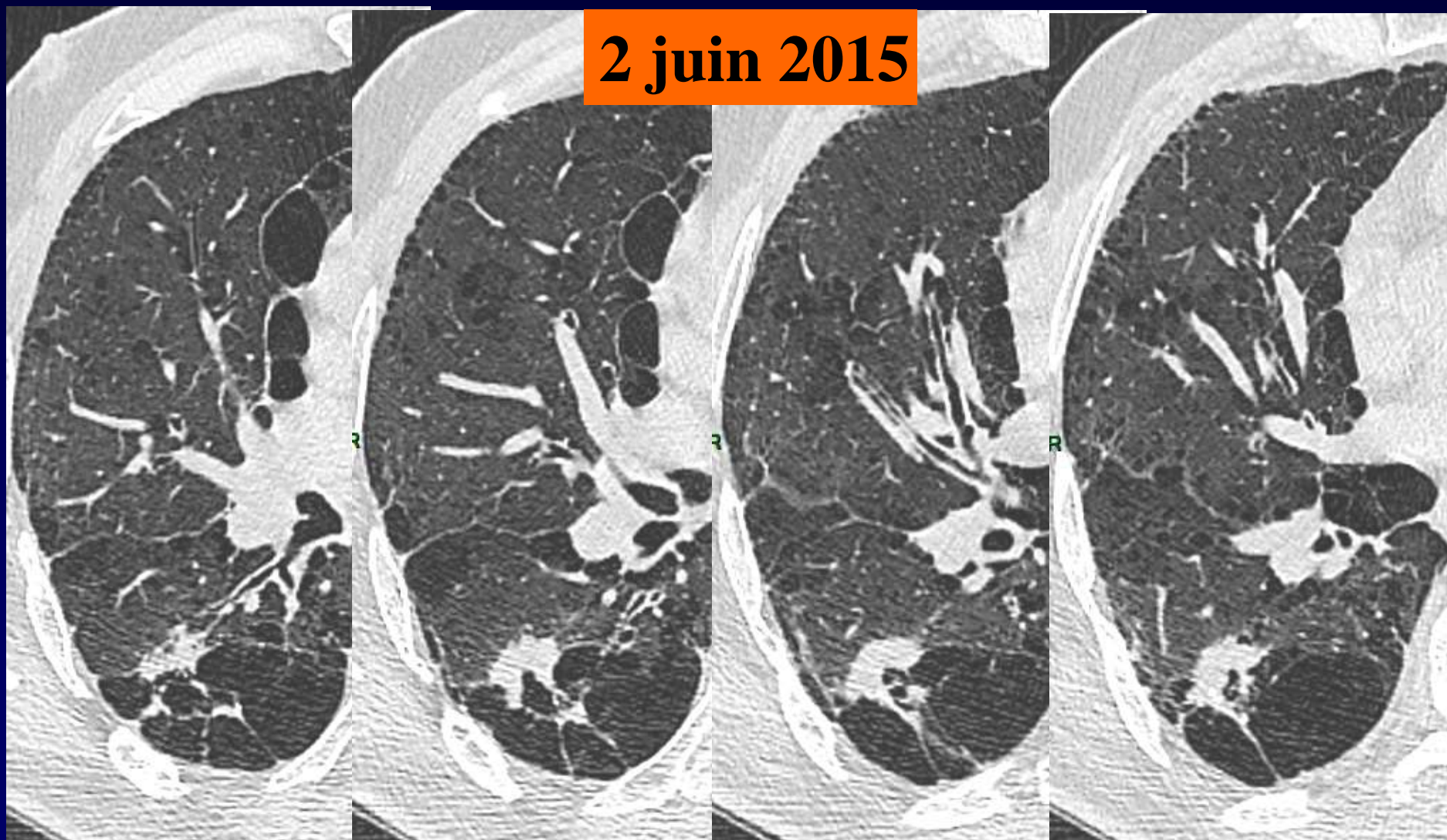


2-6-2015



Une paroi qui s'épaissit

0140161
Imagerie Appliquée
à la Pratique Pneumologique
14 Septembre 2019



2 juin 2015



Une paroi qui s'épaissit

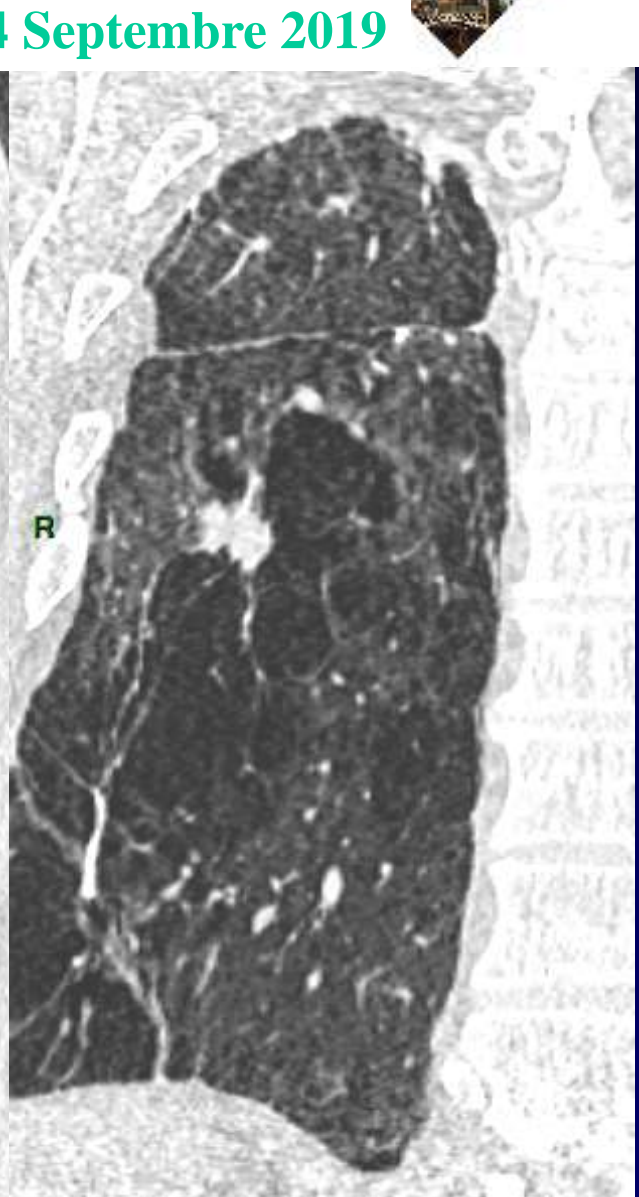
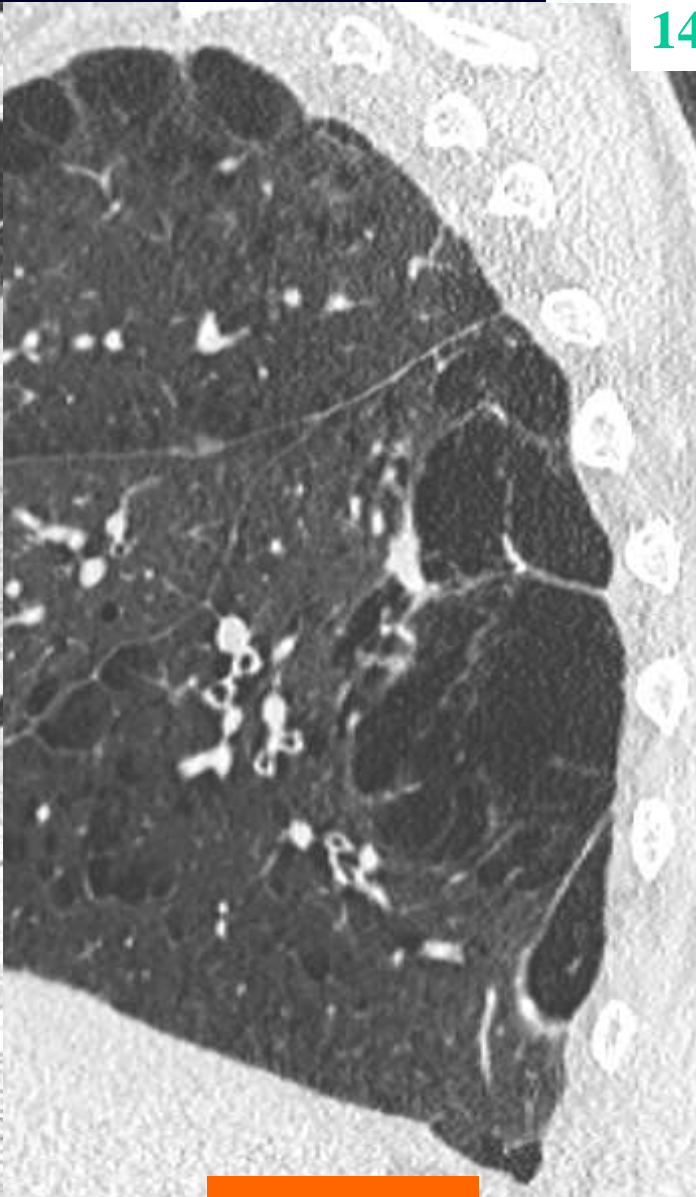


0140161

Imagerie Appliquée
à la Pratique Pneumologique



14 Septembre 2019



3-2-2014



Une paroi qui s'épaissit

014101
**Imagerie Appliquée
à la Pratique Pneumologique**

14 Septembre 2019

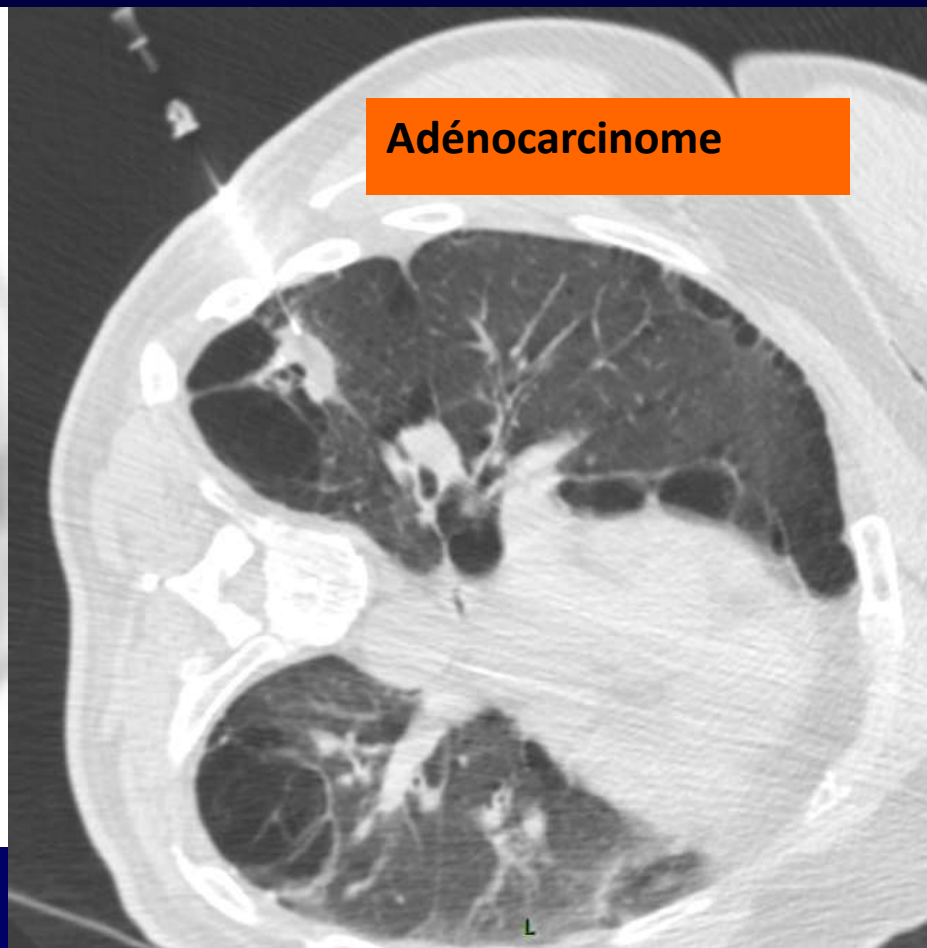
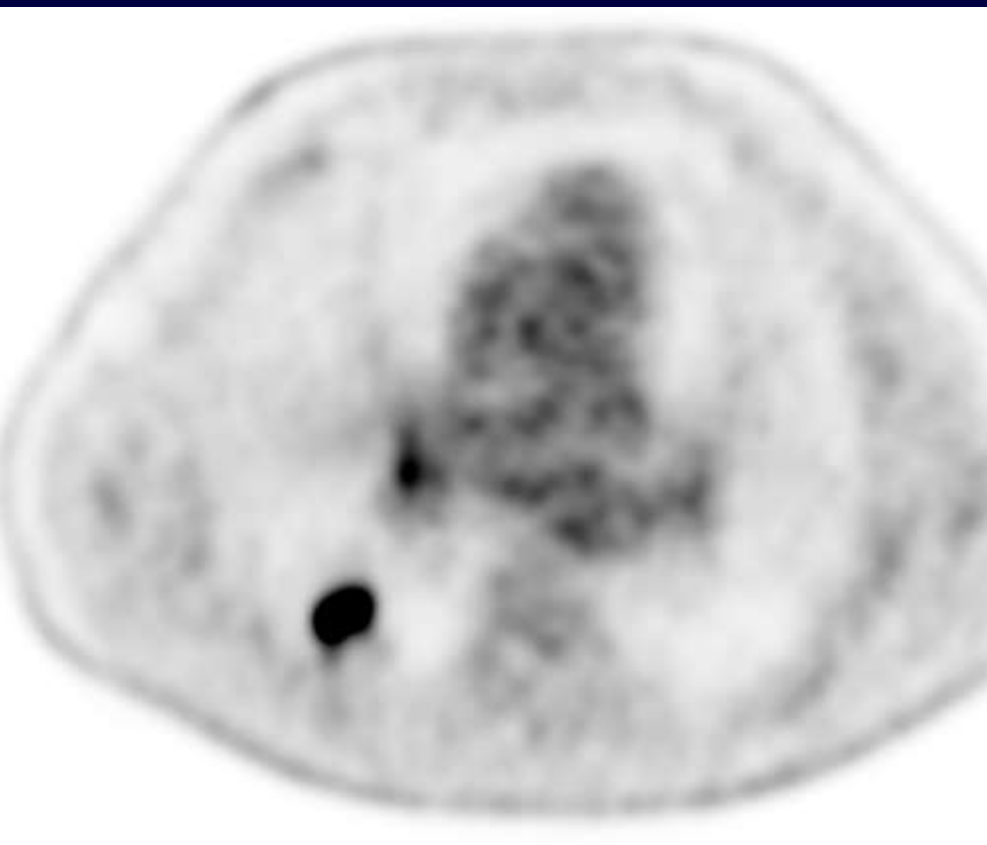
100% de la
programmation
en français

Bilan complémentaire:

Fibroskopie bronchique: arbre bronchique de BPCO

Biopsies: pas de cellules tumorales

TEP-CT: captation du traceur: nodule + Adp hilair droite





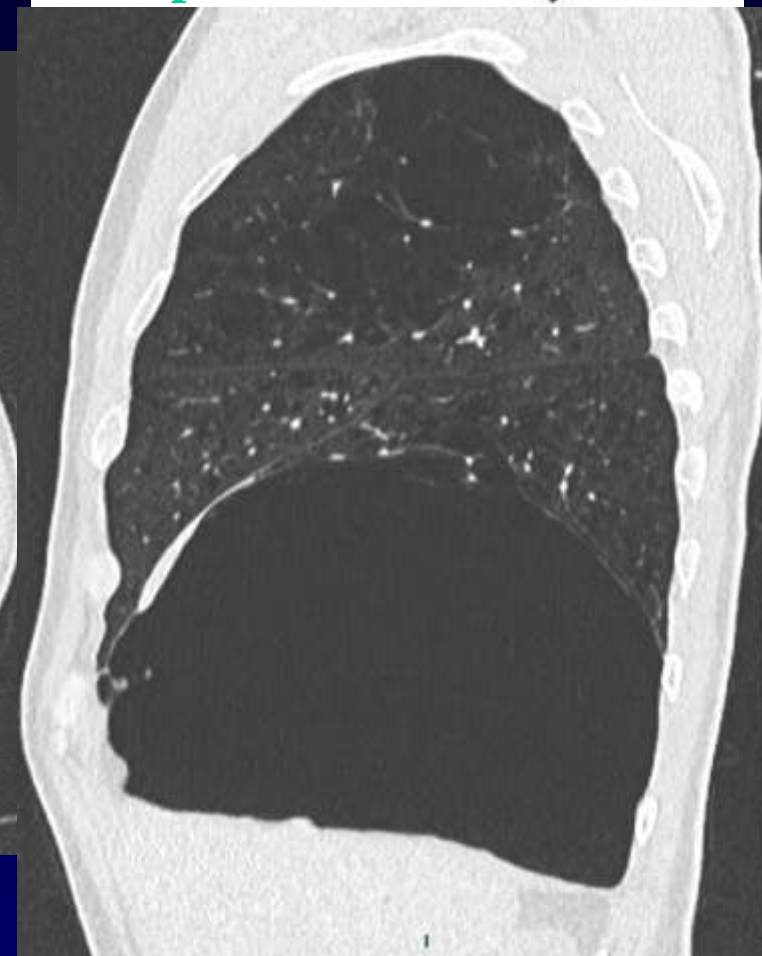
Une bulle qui se remplit



014181
Imagerie Appliquée
à la Pratique Pneumologique



14 Septembre 2019



Décembre 2018



Une bulle qui se remplit



0140161
Imagerie Appliquée
à la Pratique Pneumologique



14 Septembre 2019



Mars 2019



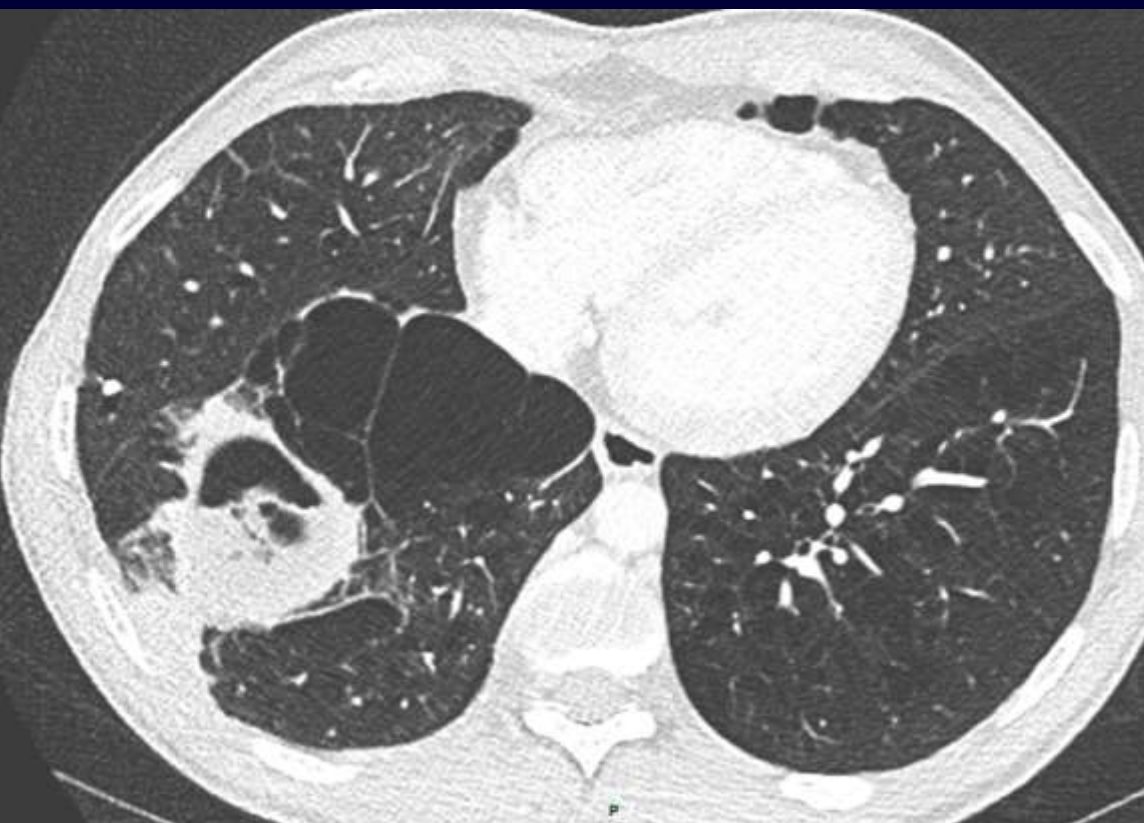
Une bulle qui se remplit



014161
Imagerie Appliquée
à la Pratique Pneumologique



14 Septembre 2019



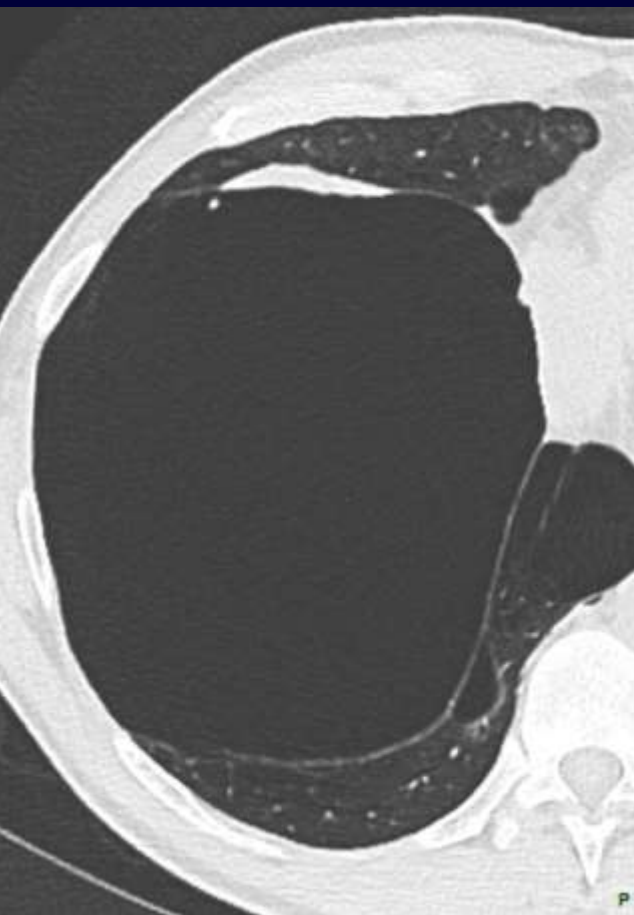
Avril 2019



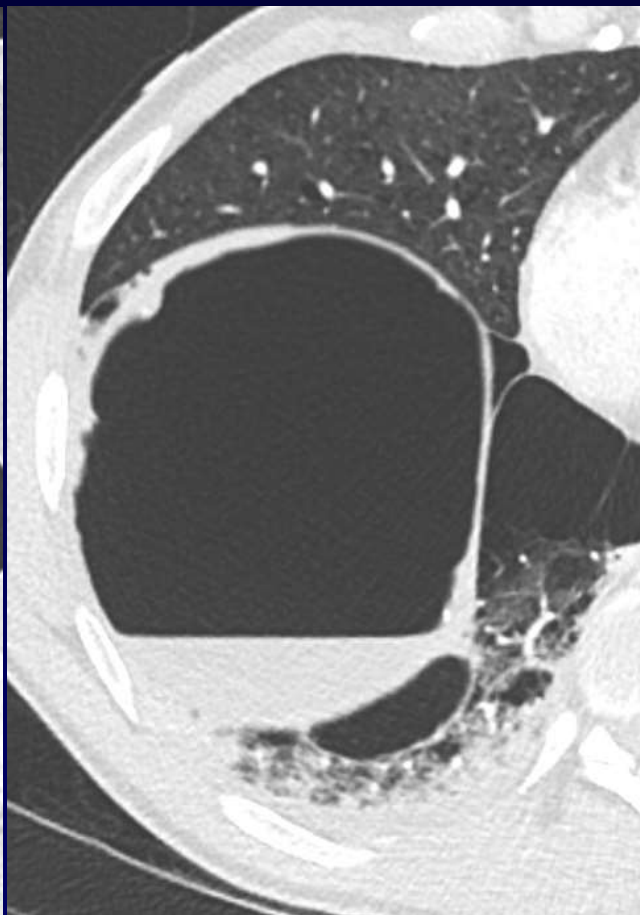
014181
Imagerie Appliquée
à la Pratique Pneumologique



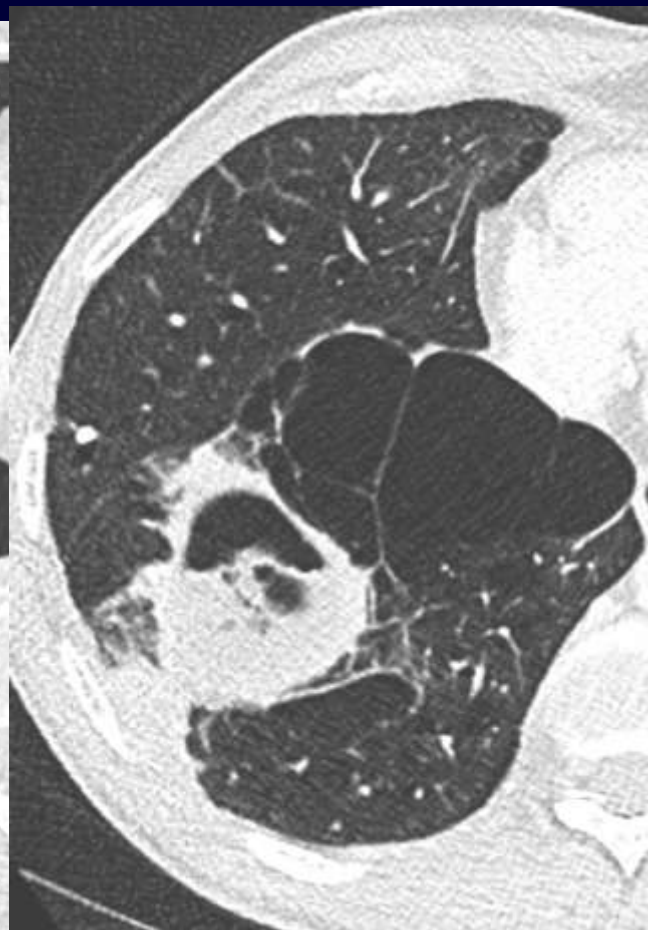
14 Septembre 2019



Dec 2018



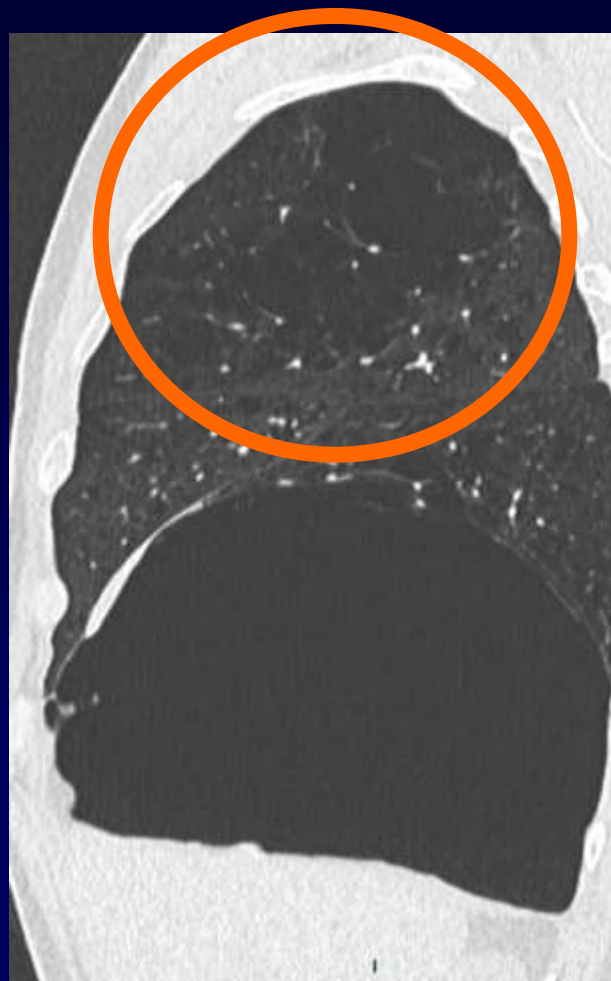
Mars 2019



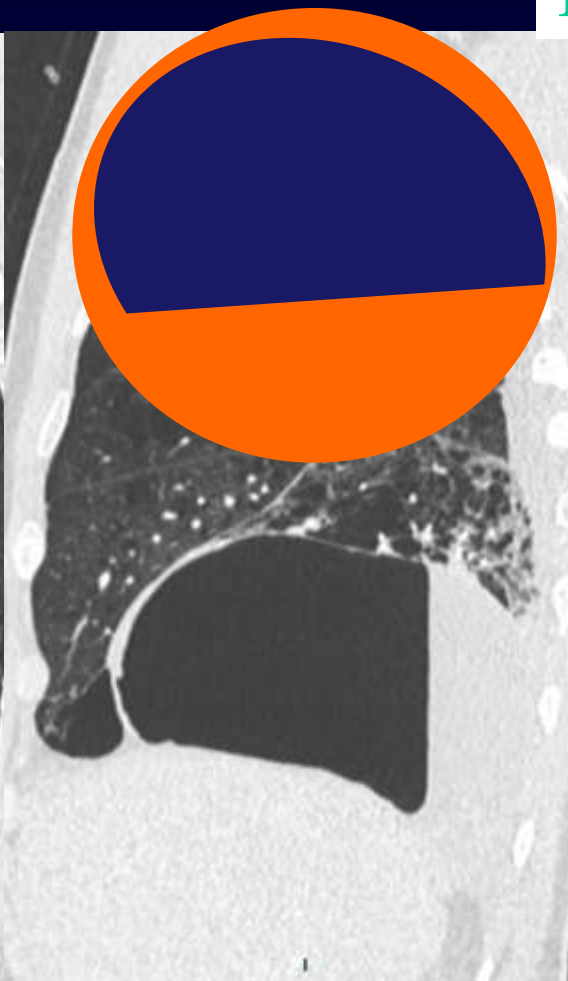
Avril 2019



14 Septembre 2019



Dec 2018



Mars 2019

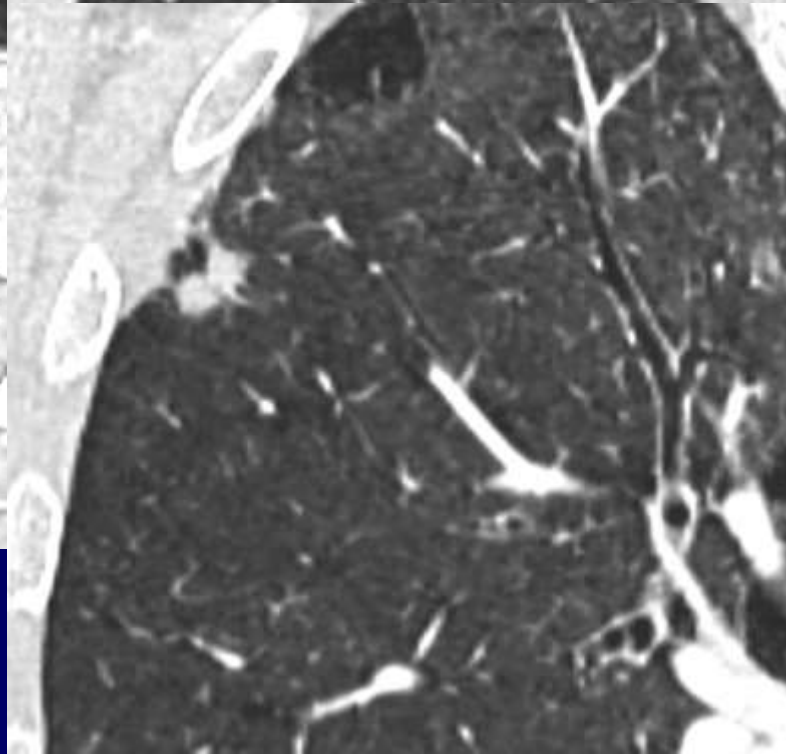
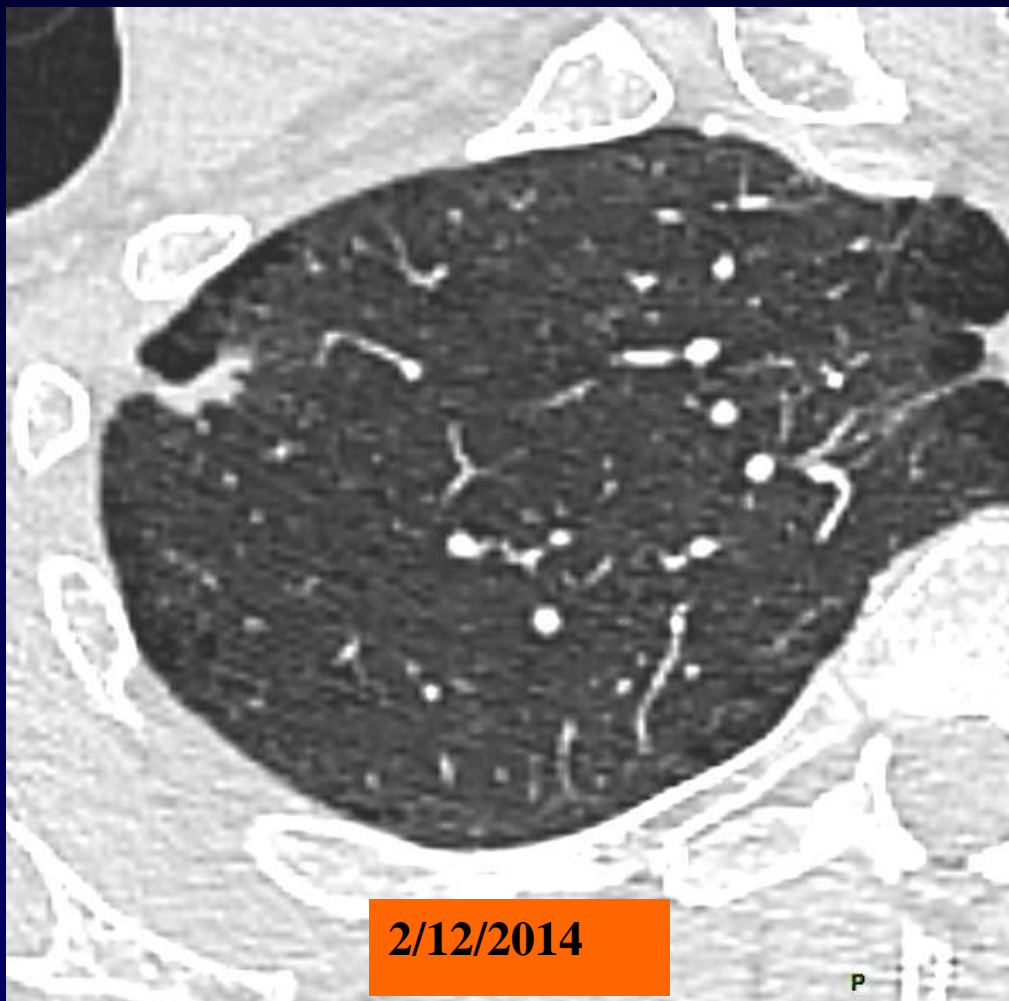


Avril 2019



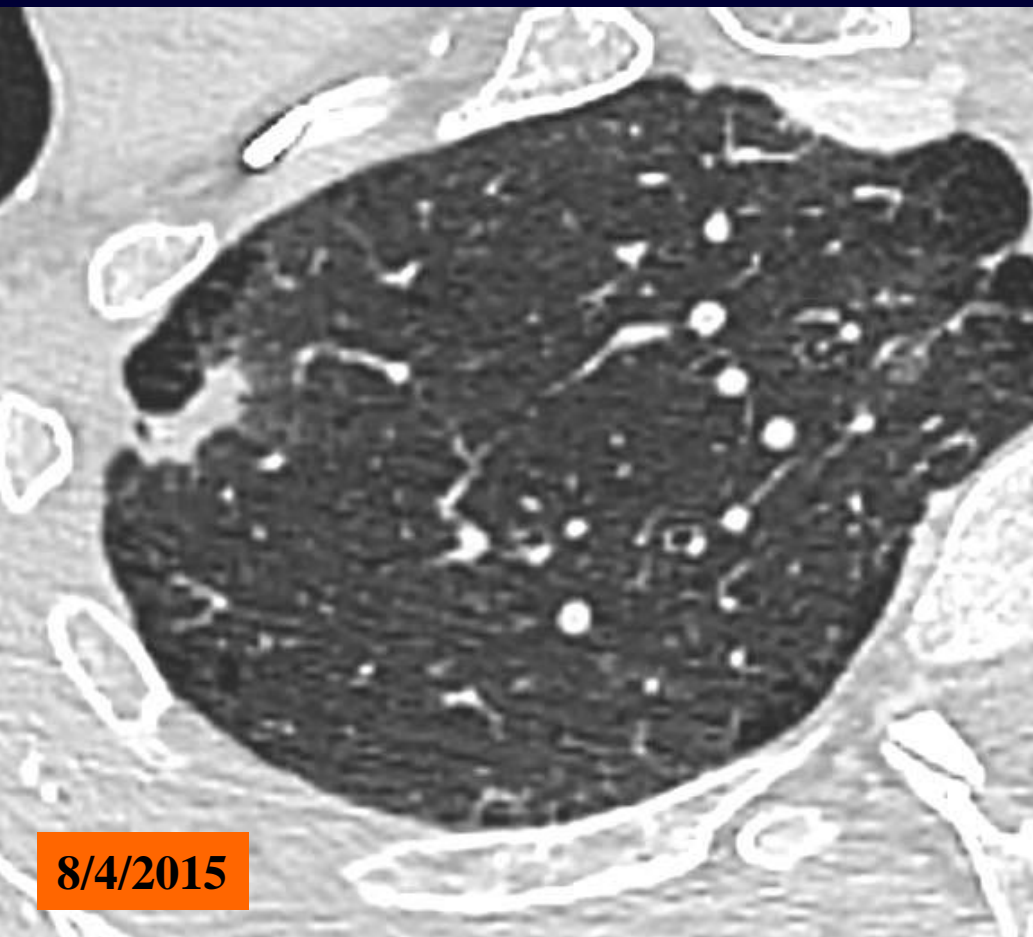
Une paroi qui s'épaissit Un autre cancer

14 Septembre 2019

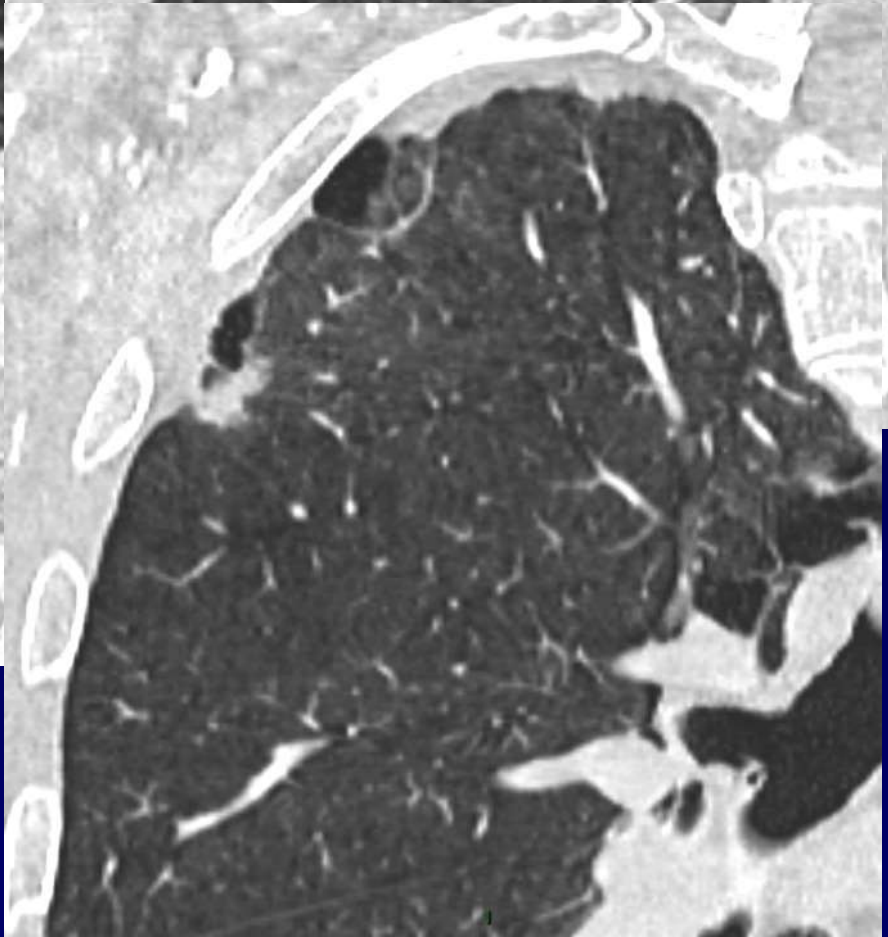
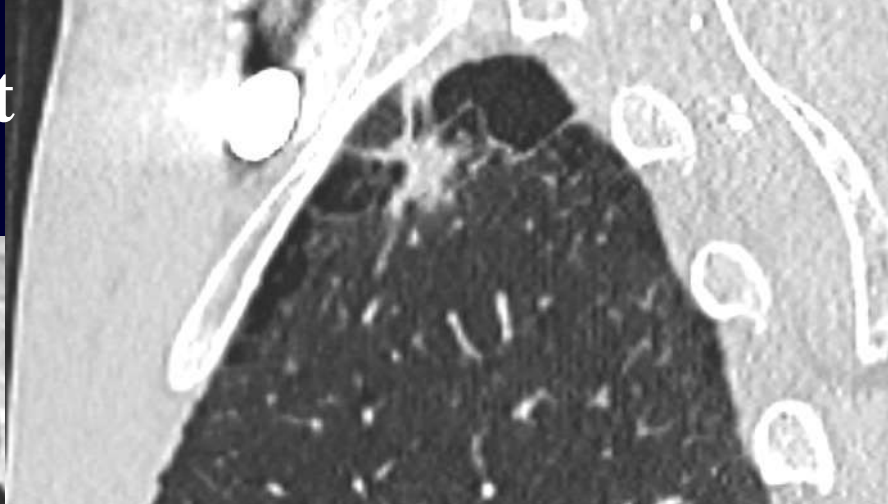


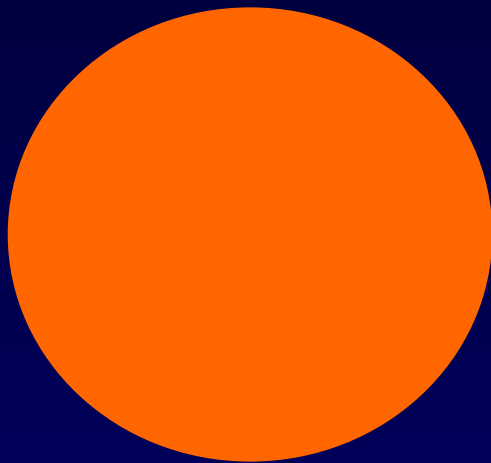
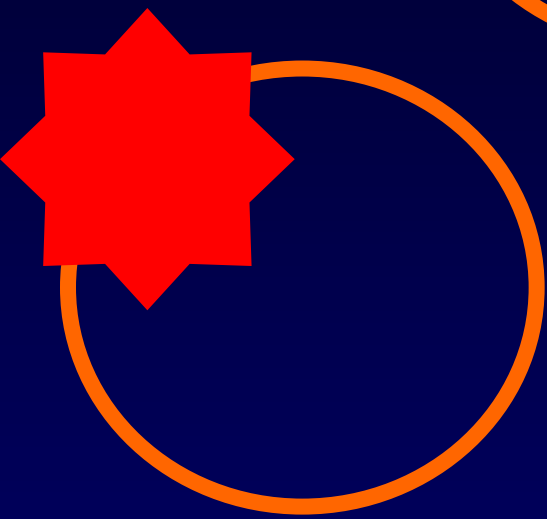


Une paroi qui s'épaissit



8/4/2015

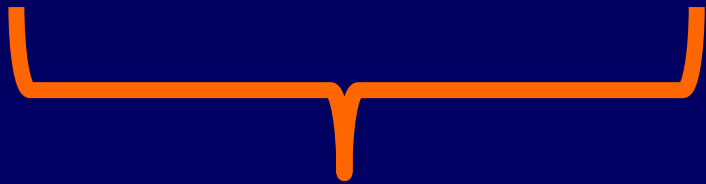




**Epaississement
Cancer+++**

Remplissage

NHA



Surinfection / saignement (cancer?)